

INDEX OF SHEETS
SEE SHEET IL1 FOR INDEX

BRIDGE PLANS BOUND
UNDER SEPARATE COVER



PROPOSED PLANS
FOR

KERSHAW COUNTY
CONTRACT ID 2847360
I-20 OVER WATEREE RIVER
TWIN BRIDGES REPLACEMENT

Hydraulic Design Reference for these plans is the:
2009
Edition of SCDOT's "Requirements for
Hydraulic Design Studies"

Design Reference for these plans is the:
2021
SCDOT Roadway Design Manual

NPDES PERMIT INFORMATION

Disturbed Area = 5.57 Acre(s)
Project Area = 7.21 Acre(s)

Approximate Location of Roadway is

Begin
Latitude 34° 12' 59.1"
Longitude 80° 38' 05.1"

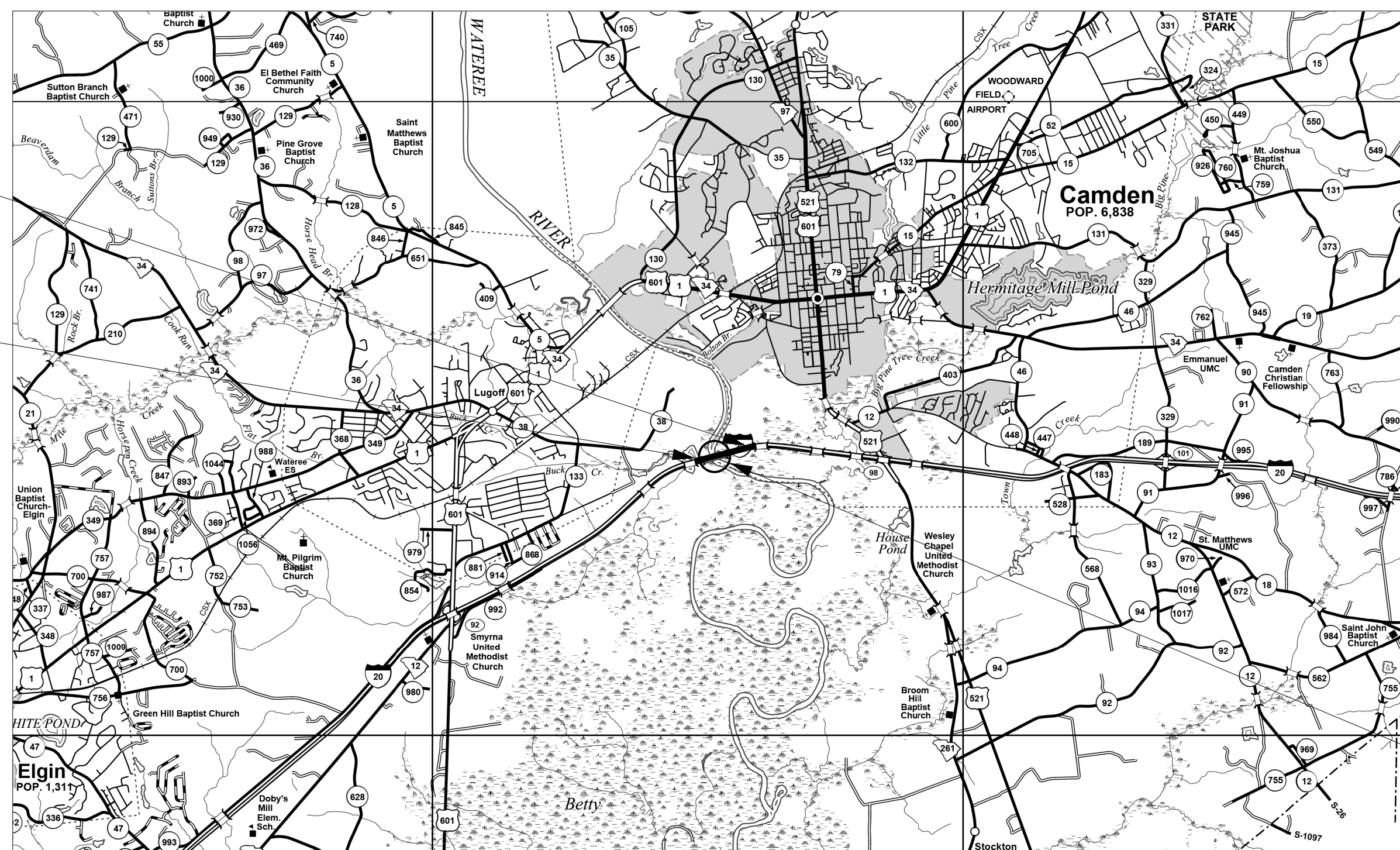
End
Latitude 34° 13' 06.6"
Longitude 80° 37' 30.1"

Hydraulic and NPDES Design
provided by:
Neel-Schaffer

Designs may be obtained from the
SCDOT Regional Production Group

CONTRACT ID 2847360
I-20
END CONSTRUCTION
STA. 1836+49.25

CONTRACT ID 2847360
I-20
BEGIN CONSTRUCTION
STA. 1792+55.00



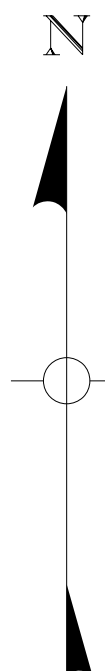
(2) 1515.33' x 48.25' CONCRETE BRIDGES
FROM STA. 1800+92.38 TO STA. 1816+07.71

ENVIRONMENTAL PERMIT INFORMATION				
USACE PERMIT	<input checked="" type="checkbox"/>	YES	<input type="checkbox"/>	NO
NEPA DOCUMENT	<input checked="" type="checkbox"/>	YES	<input type="checkbox"/>	NO
401 CERTIFICATION	<input checked="" type="checkbox"/>	YES	<input type="checkbox"/>	NO
OCRM CAP	<input type="checkbox"/>	YES	<input checked="" type="checkbox"/>	NO
NAVIGABLE WATERS	<input checked="" type="checkbox"/>	SC	<input type="checkbox"/>	USCG
	<input type="checkbox"/>	USACE	<input type="checkbox"/>	N/A

3 DAYS BEFORE DIGGING IN
SOUTH CAROLINA
CALL 811
SOUTH CAROLINA 811 (SC811)
WWW.SC811.COM
ALL UTILITIES MAY NOT BE A MEMBER OF SC811

RAILROAD INVOLVEMENT?
YES (NO)

TRAFFIC DATA		
2025	ADT	42,754
2045	ADT	57,583
	TRUCKS	21 %



LAYOUT
SCALE 1 INCH = 7,000 FEET

NET LENGTH OF ROADWAY	0.545	MILES
NET LENGTH OF BRIDGES	0.287	MILES
NET LENGTH OF PROJECT	0.832	MILES
LENGTH OF EXCEPTIONS	---	MILES
GROSS LENGTH OF PROJECT	0.832	MILES

EQUALITIES IN STATIONING
NONE

NOTE: EXCEPT AS MAY OTHERWISE BE SPECIFIED ON THE PLANS OR IN THE SPECIAL PROVISIONS, ALL MATERIALS AND WORKMANSHIP ON THIS PROJECT SHALL CONFORM TO THE SOUTH CAROLINA DEPARTMENT OF TRANSPORTATION STANDARD SPECIFICATIONS FOR HIGHWAY CONSTRUCTION (2007 EDITION) AND THE STANDARD DRAWINGS FOR ROAD CONSTRUCTION IN EFFECT AT THE TIME OF THE FINAL RFP.



ENGINEER OF RECORD

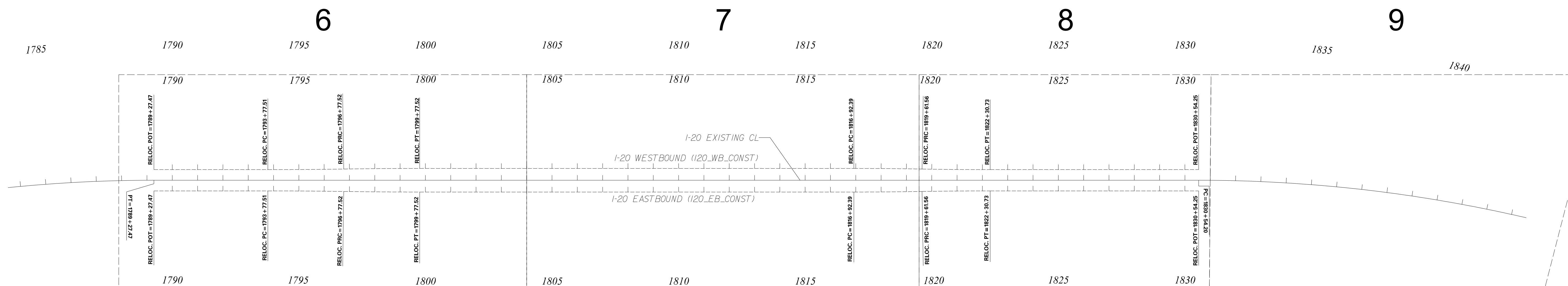
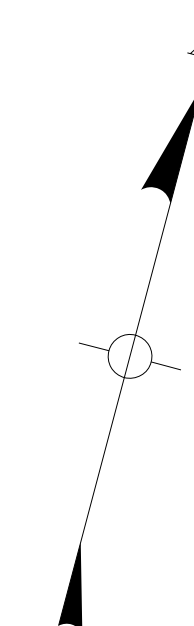
**PRELIMINARY PLANS
NOT FOR CONSTRUCTION**

FOR CONSTRUCTION : _____ DATE _____

FED. RD. DIST. NO.	STATE	COUNTY	CONTRACT ID	ROUTE NO.	SHEET NO.
3	S.C.	KERSHAW	2847360	I-20	IL1

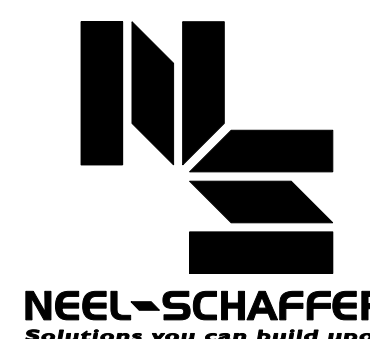
INDEX OF SHEETS

SHEET NO.	DESCRIPTION	SHEET SUBTOTALS
1	TITLE SHEET	1
IL1	INDEX/LAYOUT SHEET	1
2	SUMMARY OF ESTIMATED QUANTITIES	OMITTED
2A	DEMOLITION AND MOVING ITEMS; RESET/NEW FENCES	OMITTED
3	TYPICAL SECTIONS	1
4-4B	RIGHT-OF-WAY DATA SHEET	OMITTED
4C-4E	PROPERTY STRIP MAP	OMITTED
5	GENERAL CONSTRUCTION NOTES	OMITTED
5A-5E	REFERENCE DATA SHEETS	5
6-9	PLAN SHEETS	4
6A-8A	PROFILE SHEETS	3
X1-X10	CROSS SECTIONS	10
TOTAL SHEETS		25



randy.roberts
 Y:\Projects\0015000\0016000\16222 I-20 Bridge Replacement over Wateree River\Dgn\Plan Sheets\001L\2847360_Index_Layout_Sheet.dgn
 4/29/2022

PLANS PREPARED BY:



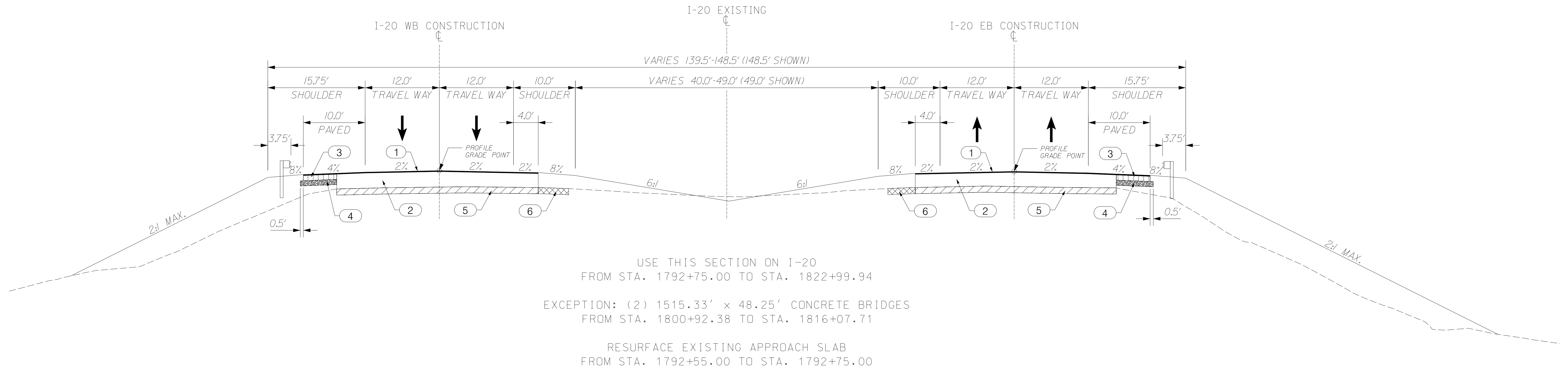
**PRELIMINARY PLANS
NOT FOR CONSTRUCTION**

4			
3			
2			
1			
REV. NO.	BY	DATE	DESCRIPTION OF REVISION
TOPO.		DATE	
DWG.		DATE	GROUP
R/W		DATE	

SOUTH CAROLINA
 DEPARTMENT OF TRANSPORTATION
 ROAD DESIGN COLUMBIA, S.C.
 KERSHAW COUNTY
 CONTRACT ID 2847360
 I-20 OVER WATREEE RIVER
 TWIN BRIDGES REPLACEMENT
 INDEX/LAYOUT SHEET
 SCALE 1"=200' RTE. I-20 DWG. NO. IL1

TYPICAL SECTION OF IMPROVEMENT SOUTH CAROLINA DEPARTMENT OF TRANSPORTATION COLUMBIA, S.C.

- NOTES:
1. PLACE MILLED IN RUMBLE STRIPS IN ACCORDANCE WITH SCDOT STANDARD DRAWING 401-205-01 & 401-205-02.
 2. SEE SCDOT STD. DWG. 805-210-00 FOR MGS3 GUARDRAIL.
 3. SEE SCDOT STD. DWG. 805-115-11 FOR MT3 LEADING END TREATMENT. SEE SCDOT STD. DWG. 805-115-10 FOR GRADING REQUIREMENTS FOR MT3 LEADING END TREATMENT.
 4. SEE SCDOT STD. DWG. 805-325-30 FOR MTBBC3 STIFFNESS TRANSITION.



NOTE: FROM I-20 EXISTING CL STA. 1822+99.94 TO STA. 1836+49.25
REPLACE EXISTING GUARDRAIL WITH MGS3 GUARDRAIL WITH
ADDITIONAL LENGTH POST. SEE PLAN SHEETS 8 AND 9.

CONSTRUCT CONCRETE FLUME, RIP RAP, AND DITCH GRADING AT
OVERFLOW BRIDGES. SEE PLAN SHEET 9.

LEGEND

- | | | |
|---|--|---|
| 1 | | HOT MIX ASPHALT SURFACE COURSE TYPE X (XXX LBS/SY) |
| 2 | | HOT MIX ASPHALT INTERMEDIATE COURSE TYPE X FOR BUILD-UP |
| 3 | | HOT MIX ASPHALT INTERMEDIATE COURSE TYPE X (XXX LBS/SY) |
| 4 | | HOT MIX ASPHALT BASE COURSE TYPE X (XXX LBS/SY) |
| 5 | | RETAIN EXISTING PAVEMENT |
| 6 | | REMOVE EXISTING PAVEMENT |

ROUTE NO./ROAD	FUNCTIONAL CLASSIFICATION	DESIGN SPEED		
		MPH	FROM STA.	TO STA.
I-20	RURAL FREEWAY	75	1792+55.00	1836+49.25

PAVEMENT DESIGN

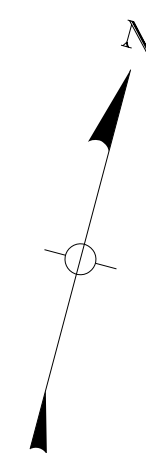
PRELIMINARY PLANS
NOT FOR CONSTRUCTION

SOUTH CAROLINA
DEPARTMENT OF TRANSPORTATION
COLUMBIA, S.C.

TYPICAL SECTION

SCALE 1"V = NTS SCALE 1"= NTS

FED. RD. DIST. NO.	STATE	COUNTY	CONTRACT ID	ROUTE NO.	SHEET NO.
3	S.C.	KERSHAW	2847360	I-20	5B

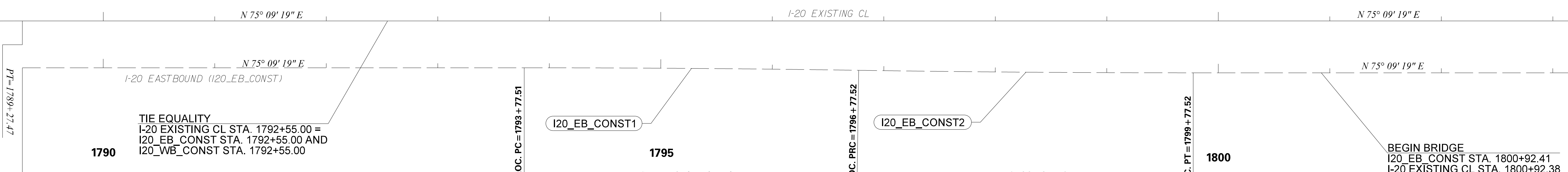
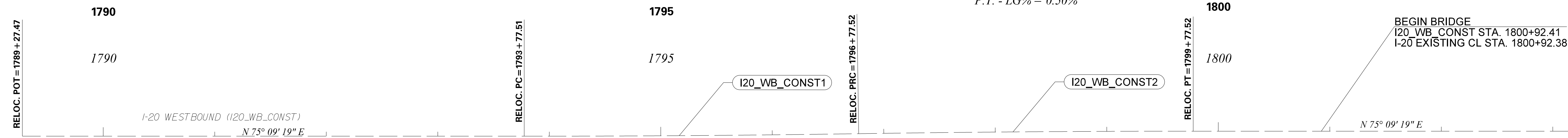


P.I. = 1795+27.52
Δ = 0° 51' 34" (LT)
D = 0° 17' 11"
T = 150.00'
L = 300.00'
E = 0.56'
R = 20,000.00'
D.S. = 75 MPH
eMAX = 8%
e = NC
P.C. - LG% = 0.50%
P.T. - LG% = 0.50%

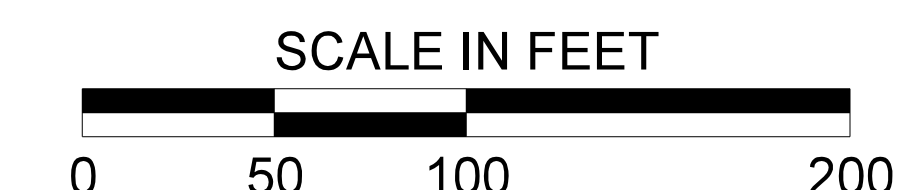
P.I. = 1798+27.52
Δ = 0° 51' 34" (RT)
D = 0° 17' 11"
T = 150.00'
L = 300.00'
E = 0.56'
R = 20,000.00'
D.S. = 75 MPH
eMAX = 8%
e = NC
P.C. - LG% = 0.50%
P.T. - LG% = 0.50%

P.I. = 1795+27.52
Δ = 0° 51' 34" (RT)
D = 0° 17' 11"
T = 150.00'
L = 300.00'
E = 0.56'
R = 20,000.00'
D.S. = 75 MPH
eMAX = 8%
e = NC
P.C. - LG% = 0.50%
P.T. - LG% = 0.50%

P.I. = 1798+27.52
Δ = 0° 51' 34" (LT)
D = 0° 17' 11"
T = 150.00'
L = 300.00'
E = 0.56'
R = 20,000.00'
D.S. = 75 MPH
eMAX = 8%
e = NC
P.C. - LG% = 0.50%
P.T. - LG% = 0.50%



MATCHLINE STA. 1804+00.00
 SEE SHEET NO. 5B



Y:\Projects\00150000\00160000\16222 I-20 Bridge Replacement over Wateree River\Plan Sheets\005B_2847360_Reference_Data.dgn
 4/29/2022

PLANS PREPARED BY:



**PRELIMINARY PLANS
NOT FOR CONSTRUCTION**

4			
3			
2			
1			
REV. NO.	BY	DATE	DESCRIPTION OF REVISION
TOPO.			
DWG.			GROUP
R/W			

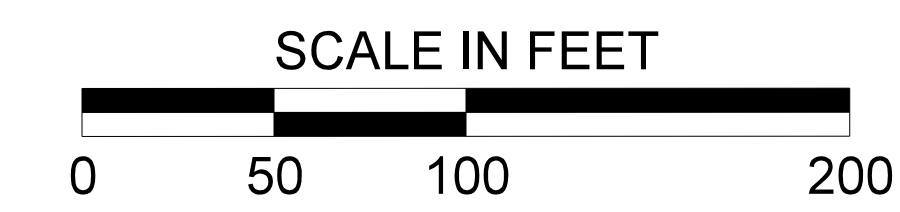
SOUTH CAROLINA
 DEPARTMENT OF TRANSPORTATION
 ROAD DESIGN COLUMBIA, S.C.
 KERSHAW COUNTY
 CONTRACT ID 2847360
 I-20 OVER WATREEE RIVER
 TWIN BRIDGES REPLACEMENT
 REFERENCE DATA SHEET
 SCALE 1"=50' RTE. I-20 DWG. NO. 5B

FED. RD. DIST. NO.	STATE	COUNTY	CONTRACT ID	ROUTE NO.	SHEET NO.
3	S.C.	KERSHAW	2847360	I-20	5C

MATCHLINE STA. 1804+00.00
SEE SHEET NO. 5A



MATCHLINE STA. 1819+50.00
SEE SHEET NO. 5C



randy.roberts
 Y:\Projects\0015000\0016000\16222 I-20 Bridge Replacement over Wateree River\Dgn\Plan Sheets\005C_2847360_Reference_Data.dgn
 4/29/2022

PLANS PREPARED BY:

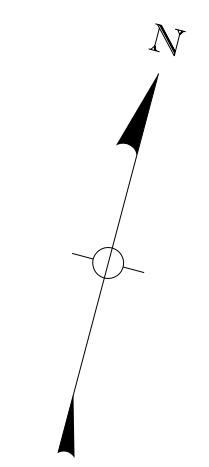


**PRELIMINARY PLANS
NOT FOR CONSTRUCTION**

4			
3			
2			
1			
REV. NO.	BY	DATE	DESCRIPTION OF REVISION
TOPO.			
DWG.			
R/W			

SOUTH CAROLINA
 DEPARTMENT OF TRANSPORTATION
 ROAD DESIGN COLUMBIA, S.C.
 KERSHAW COUNTY
 CONTRACT ID 2847360
 I-20 OVER WATREEE RIVER
 TWIN BRIDGES REPLACEMENT
 REFERENCE DATA SHEET
 SCALE 1"=50' RTE. I-20 DWG. NO. 5C

FED. RD. DIST. NO.	STATE	COUNTY	CONTRACT ID	ROUTE NO.	SHEET NO.
3	S.C.	KERSHAW	2847360	I-20	5D



P.I. = 1820+96.15
 $\Delta = 0^\circ 57' 28''$ (LT)
 $D = 0^\circ 21' 21''$
 $T = 134.59'$
 $L = 269.17'$
 $E = 0.56'$
 $R = 16,100.00'$
 $D.S. = 75$ MPH
 $e_{MAX} = 8\%$
 $e = NC$
 $P.C. - LG\% = 0.50\%$
 $P.T. - LG\% = 0.50\%$

1820

1820

I20_WB_CONST4

RELOC. PT = 1822 + 30.73

1825

1825

N 75° 09' 19" E

I-20 WESTBOUND (I20_WB_CONST)

1830

1830

TIE EQUALITY
 I20_WB_CONST STA. 1830+54.25 =
 I-20 EXISTING CL STA. 1830+54.20

RELOC. POT = 1830 + 54.25

1835

MATCHLINE STA. 1819+50.00
 SEE SHEET NO. 5B

RELOC. PRC = 1819 + 61.56

RELOC. PRC = 1819 + 61.56

I20_EB_CONST4

RELOC. PT = 1822 + 30.73

1825

N 75° 09' 19" E

I-20 EASTBOUND (I20_EB_CONST)

1830

TIE EQUALITY
 I20_EB_CONST STA. 1830+54.25 =
 I-20 EXISTING CL STA. 1830+54.20

PC = 1830 + 54.20

RELOC. POT = 1830 + 54.25

1820

P.I. = 1820+96.15
 $\Delta = 0^\circ 57' 28''$ (RT)
 $D = 0^\circ 21' 21''$
 $T = 134.59'$
 $L = 269.17'$
 $E = 0.56'$
 $R = 16,100.00'$
 $D.S. = 75$ MPH
 $e_{MAX} = 8\%$
 $e = NC$
 $P.C. - LG\% = 0.50\%$
 $P.T. - LG\% = 0.50\%$



randy.roberts
 Y:\Projects\005000\006000\6222 I-20 Bridge Replacement over Wateree River\Dgn\Plan Sheets\005D_2847360_Reference_Data.dgn
 4/29/2022

PLANS PREPARED BY:



**PRELIMINARY PLANS
NOT FOR CONSTRUCTION**

4			
3			
2			
1			
REV. NO.	BY	DATE	DESCRIPTION OF REVISION
TOPO.			
DWG.			
R/W			

SOUTH CAROLINA
 DEPARTMENT OF TRANSPORTATION
 ROAD DESIGN COLUMBIA, S.C.
 KERSHAW COUNTY
 CONTRACT ID 2847360
 I-20 OVER WATREEE RIVER
 TWIN BRIDGES REPLACEMENT
 REFERENCE DATA SHEET
 SCALE 1"=50' RTE. I-20 DWG. NO. 5D

FED. RD. DIST. NO.	STATE	COUNTY	CONTRACT ID	ROUTE NO.	SHEET NO.
3	S.C.	KERSHAW	2847360	I-20	5E

I-20 EXISTING CL

Beginning chain CL description

Point 10000 N 864,504.4990 E 2,106,246.6612 Sta 1741+99.52

Course from 10000 to PC C1 N 47° 09' 51.34" E Dist 1,928.8500

Curve Data

Curve C1
 Feature: DEFAULT
 P.I. Station 1775+56.43 N 866,786.8609 E 2,108,708.3059
 Delta = 27° 59' 27.44" (RT)
 Degree = 1° 00' 00.00"
 Tangent = 1,428.0639
 Length = 2,729.0955
 Radius = 5,729.5780
 External = 175.2870
 Long Chord = 2,771.3431
 Mid. Ord. = 170.0836
 P.C. Station 1761+28.37 N 865,815.9219 E 2,107,661.0983
 P.T. Station 1789+27.47 N 867,152.7328 E 2,110,088.7059
 C.C. N 861,614.3885 E 2,111,556.6317
 Back = N 47° 09' 51.34" E
 Ahead = N 75° 09' 18.78" E
 Chord Bear = N 61° 09' 35.06" E

Course from PT C1 to PC C2 N 75° 09' 18.78" E Dist 4,126.7358

Curve Data

Curve C2
 Feature: DEFAULT
 P.I. Station 1841+76.49 N 868,497.5398 E 2,115,162.5346
 Delta = 22° 09' 54.41" (RT)
 Degree = 1° 00' 00.00"
 Tangent = 1,122.2872
 Length = 2,216.5115
 Radius = 5,729.5780
 External = 108.8801
 Long Chord = 2,202.7159
 Mid. Ord. = 106.8496
 P.C. Station 1830+54.20 N 868,210.0082 E 2,114,077.7055
 P.T. Station 1852+70.71 N 868,354.5418 E 2,116,275.6744
 C.C. N 862,671.6639 E 2,115,545.6312
 Back = N 75° 09' 18.78" E
 Ahead = S 82° 40' 46.81" E
 Chord Bear = N 86° 14' 15.98" E

Course from PT C2 to 10001 S 82° 40' 46.81" E Dist 5,717.4036

Point 10001 N 867,626.0499 E 2,121,946.4771 Sta 1909+88.12

Ending chain CL description

I-20 WB CONST.

Beginning chain I20_WB_CONST description

Point WB001 N 867,193.3310 E 2,110,077.9455 Sta 1789+27.47

Course from WB001 to PC I20_WB_CONST1 N 75° 09' 18.78" E Dist 450.0430

Curve Data

Curve I20_WB_CONST1
 P.I. Station 1795+27.52 N 867,347.0639 E 2,110,657.9651
 Delta = 0° 51' 34.00" (LT)
 Degree = 0° 17' 11.32"
 Tangent = 150.0042
 Length = 300.0028
 Radius = 20,000.0000
 External = 0.5625
 Long Chord = 300.0000
 Mid. Ord. = 0.5625
 P.C. Station 1793+77.51 N 867,308.6326 E 2,110,512.9675
 P.T. Station 1796+77.52 N 867,387.6658 E 2,110,802.3700
 C.C. N 886,641.1012 E 2,105,388.9399
 Back = N 75° 09' 18.78" E
 Ahead = N 74° 17' 44.78" E
 Chord Bear = N 74° 43' 31.78" E

Curve Data

Curve I20_WB_CONST2
 P.I. Station 1798+27.52 N 867,428.2677 E 2,110,946.7748
 Delta = 0° 51' 34.00" (LT)
 Degree = 0° 17' 11.32"
 Tangent = 150.0042
 Length = 300.0028
 Radius = 20,000.0000
 External = 0.5625
 Long Chord = 300.0000
 Mid. Ord. = 0.5625
 P.C. Station 1796+77.52 N 867,387.6658 E 2,110,802.3700
 P.T. Station 1799+77.52 N 867,466.6990 E 2,111,091.7724
 C.C. N 848,134.2304 E 2,116,215.8000
 Back = N 74° 17' 44.78" E
 Ahead = N 75° 09' 18.78" E
 Chord Bear = N 74° 43' 31.78" E

Course from PT I20_WB_CONST2 to PC I20_WB_CONST3 N 75° 09' 18.78" E Dist 1,629.7225

Curve Data

Curve I20_WB_CONST3
 P.I. Station 1817+41.83 N 867,918.7176 E 2,112,797.1957
 Delta = 0° 57' 28.45" (RT)
 Degree = 0° 21' 21.15"
 Tangent = 134.5874
 Length = 269.1685
 Radius = 16,100.0000
 External = 0.5625
 Long Chord = 269.1654
 Mid. Ord. = 0.5625
 P.C. Station 1816+07.24 N 867,884.2361 E 2,112,667.1004
 P.T. Station 1818+76.41 N 867,951.0193 E 2,112,927.8493
 C.C. N 852,321.5989 E 2,116,791.9426
 Back = N 75° 09' 18.78" E
 Ahead = N 76° 06' 47.22" E
 Chord Bear = N 75° 38' 03.00" E

I-20 WB CONST.

Curve Data

Curve I20_WB_CONST4
 P.I. Station 1820+11.00 N 867,983.3211 E 2,113,058.5029
 Delta = 0° 57' 28.45" (LT)
 Degree = 0° 21' 21.15"
 Tangent = 134.5874
 Length = 269.1685
 Radius = 16,100.0000
 External = 0.5625
 Long Chord = 269.1654
 Mid. Ord. = 0.5625
 P.C. Station 1818+76.41 N 867,951.0193 E 2,112,927.8493
 P.T. Station 1821+45.58 N 868,017.8026 E 2,113,188.5982
 C.C. N 883,580.4398 E 2,109,063.7560
 Back = N 76° 06' 47.22" E
 Ahead = N 75° 09' 18.78" E
 Chord Bear = N 75° 38' 03.00" E

Course from PT I20_WB_CONST4 to WB002 N 75° 09' 18.78" E Dist 908.6753

Point WB002 N 868,250.6064 E 2,114,066.9450 Sta 1830+54.25

Ending chain I20_WB_CONST description

CURVE	D.S.	RADIUS (FT)	e Max	e	P.C. - LG	P.T. - LG
I20_WB_CONST1	75	20,000.00	8%	NC	0.50%	0.50%
I20_WB_CONST2	75	20,000.00	8%	NC	0.50%	0.50%
I20_WB_CONST3	75	16,100.00	8%	NC	0.50%	0.50%
I20_WB_CONST4	75	16,100.00	8%	NC	0.50%	0.50%

I-20 EB CONST.

Beginning chain I20_EB_CONST description

Point EB001 N 867,112.1346 E 2,110,099.4664 Sta 1789+27.47

Course from EB001 to PC I20_EB_CONST1 N 75° 09' 18.78" E Dist 450.0430

Curve Data

Curve I20_EB_CONST1
 P.I. Station 1795+27.52 N 867,265.8676 E 2,110,679.4861
 Delta = 0° 51' 34.00" (RT)
 Degree = 0° 17' 11.32"
 Tangent = 150.0042
 Length = 300.0028
 Radius = 20,000.0000
 External = 0.5625
 Long Chord = 300.0000
 Mid. Ord. = 0.5625
 P.C. Station 1793+77.51 N 867,227.4363 E 2,110,534.4885
 P.T. Station 1796+77.52 N 867,302.1196 E 2,110,825.0438
 C.C. N 847,894.9677 E 2,115,658.5161
 Back = N 75° 09' 18.78" E
 Ahead = N 76° 00' 52.78" E
 Chord Bear = N 75° 35' 05.78" E

Curve Data

Curve I20_EB_CONST2
 P.I. Station 1798+27.52 N 867,338.3717 E 2,110,970.6015
 Delta = 0° 51' 34.00" (LT)
 Degree = 0° 17' 11.32"
 Tangent = 150.0042
 Length = 300.0028
 Radius = 20,000.0000
 External = 0.5625
 Long Chord = 300.0000
 Mid. Ord. = 0.5625
 P.C. Station 1796+77.52 N 867,302.1196 E 2,110,825.0438
 P.T. Station 1799+77.52 N 867,376.8030 E 2,111,115.5991
 C.C. N 886,709.2715 E 2,105,991.5715
 Back = N 76° 00' 52.78" E
 Ahead = N 75° 09' 18.78" E
 Chord Bear = N 75° 35' 05.78" E

Course from PT I20_EB_CONST2 to PC I20_EB_CONST3 N 75° 09' 18.78" E Dist 1,629.7225

Curve Data

Curve I20_EB_CONST3
 P.I. Station 1817+41.83 N 867,828.8216 E 2,112,821.0224
 Delta = 0° 57' 28.45" (LT)
 Degree = 0° 21' 21.15"
 Tangent = 134.5874
 Length = 269.1685
 Radius = 16,100.0000
 External = 0.5625
 Long Chord = 269.1654
 Mid. Ord. = 0.5625
 P.C. Station 1816+07.24 N 867,794.3401 E 2,112,690.9271
 P.T. Station 1818+76.41 N 867,865.4732 E 2,112,950.5231
 C.C. N 883,356.9773 E 2,108,566.0848
 Back = N 75° 09' 18.78" E
 Ahead = N 74° 11' 50.33" E
 Chord Bear = N 74° 40' 34.55" E

I-20 EB CONST.

Curve Data

Curve I20_EB_CONST4
 P.I. Station 1820+11.00 N 867,902.1247 E 2,113,080.0238
 Delta = 0° 57' 28.45" (RT)
 Degree = 0° 21' 21.15"
 Tangent = 134.5874
 Length = 269.1685
 Radius = 16,100.0000
 External = 0.5625
 Long Chord = 269.1654
 Mid. Ord. = 0.5625
 P.C. Station 1818+76.41 N 867,865.4732 E 2,112,950.5231
 P.T. Station 1821+45.58 N 867,936.6062 E 2,113,210.1191
 C.C. N 852,373.9690 E 2,117,334.9614
 Back = N 74° 11' 50.33" E
 Ahead = N 75° 09' 18.78" E
 Chord Bear = N 74° 40' 34.55" E

Course from PT I20_EB_CONST4 to EB002 N 75° 09' 18.78" E Dist 908.6753

Point EB002 N 868,169.4101 E 2,114,088.4659 Sta 1830+54.25

Ending chain I20_EB_CONST description

CURVE	D.S.	RADIUS (FT)	e Max	e	P.C. - LG	P.T. - LG
I20_EB_CONST1	75	20,000.00	8%	NC	0.50%	0.50%
I20_EB_CONST2	75	20,000.00	8%	NC	0.50%	0.50%
I20_EB_CONST3	75	16,100.00	8%	NC	0.50%	0.50%
I20_EB_CONST4	75	16,100.00	8%	NC	0.50%	0.50%

r:\projects\005000\0016000\16222 I-20 Bridge Replacement over Wateree River\Dgn\Plan_Sheets\005E_2847360_Reference_Data.dgn
 4/29/2022

PLANS PREPARED BY:



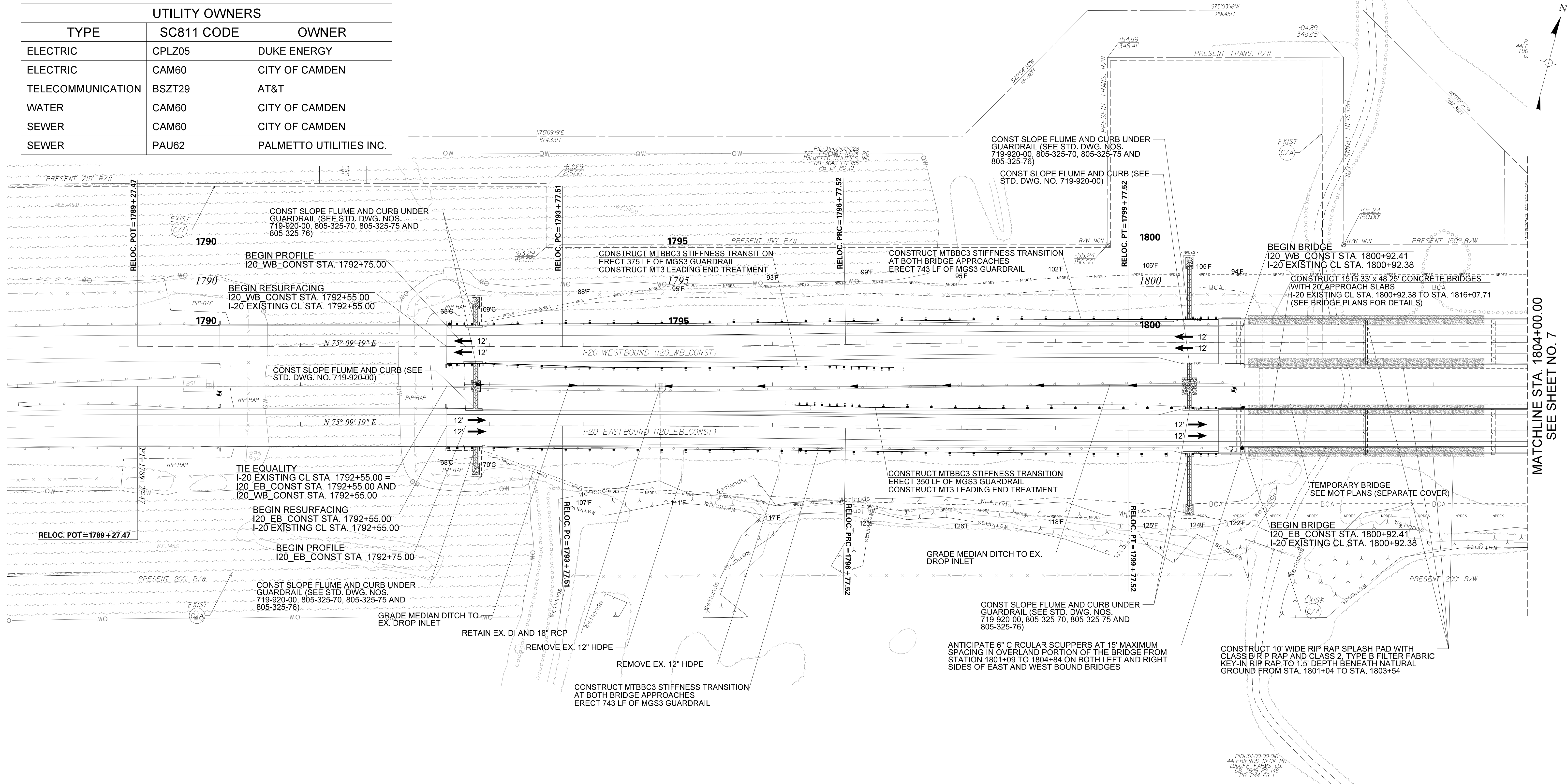
PRELIMINARY PLANS
NOT FOR CONSTRUCTION

4				
3				
2				
1				
REV. NO.	BY	DATE	DESCRIPTION OF REVISION	
TOPO.		DATE		
DWG.		DATE	GROUP	-
R/W		DATE		

SOUTH CAROLINA
 DEPARTMENT OF TRANSPORTATION
 ROAD DESIGN COLUMBIA, S.C.
 KERSHAW COUNTY
 CONTRACT ID 2847360
 I-20 OVER WATREEE RIVER
 TWIN BRIDGES REPLACEMENT
 REFERENCE DATA SHEET
 SCALE 1"=50' RTE. I-20 DWG. NO. 5E

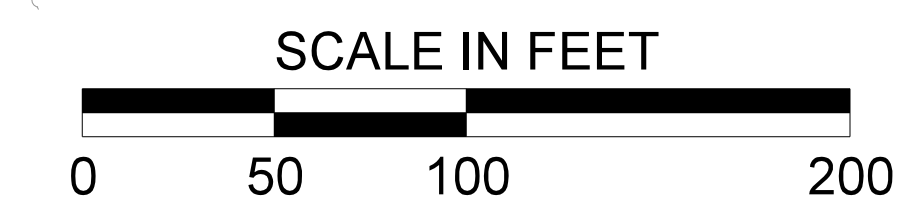
FED. RD. DIST. NO.	STATE	COUNTY	CONTRACT ID	ROUTE NO.	SHEET NO.
3	S.C.	KERSHAW	2847360	I-20	6

UTILITY OWNERS		
TYPE	SC811 CODE	OWNER
ELECTRIC	CPLZ05	DUKE ENERGY
ELECTRIC	CAM60	CITY OF CAMDEN
TELECOMMUNICATION	BSZT29	AT&T
WATER	CAM60	CITY OF CAMDEN
SEWER	CAM60	CITY OF CAMDEN
SEWER	PAU62	PALMETTO UTILITIES INC.



MATCHLINE STA. 1804+00.00
SEE SHEET NO. 7

ALIGNMENT CONTROL CAN BE FOUND ON REFERENCE DATA SHEET



RELOCATE CENTERLINE NOTES:
 RELOCATE CENTERLINE I-20 EB (I20_EB_CONST)
 FROM STA 1793+77.51 TO STA. 1822+30.73
 RELOCATE CENTERLINE I-20 WB (I20_WB_CONST)
 FROM STA 1793+77.51 TO STA. 1822+30.73

PLANS PREPARED BY:

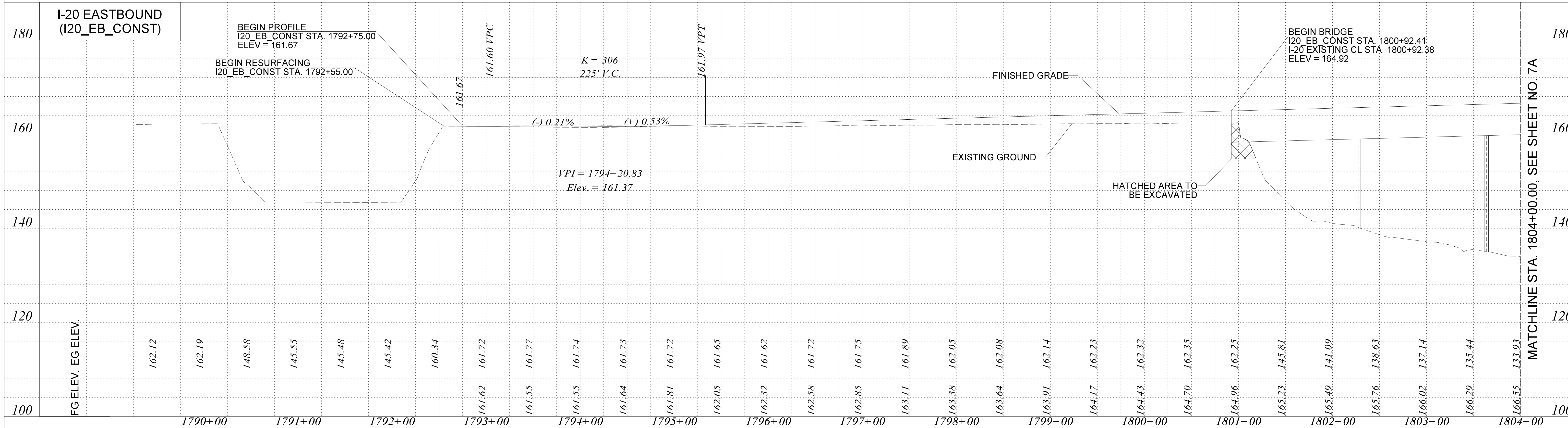
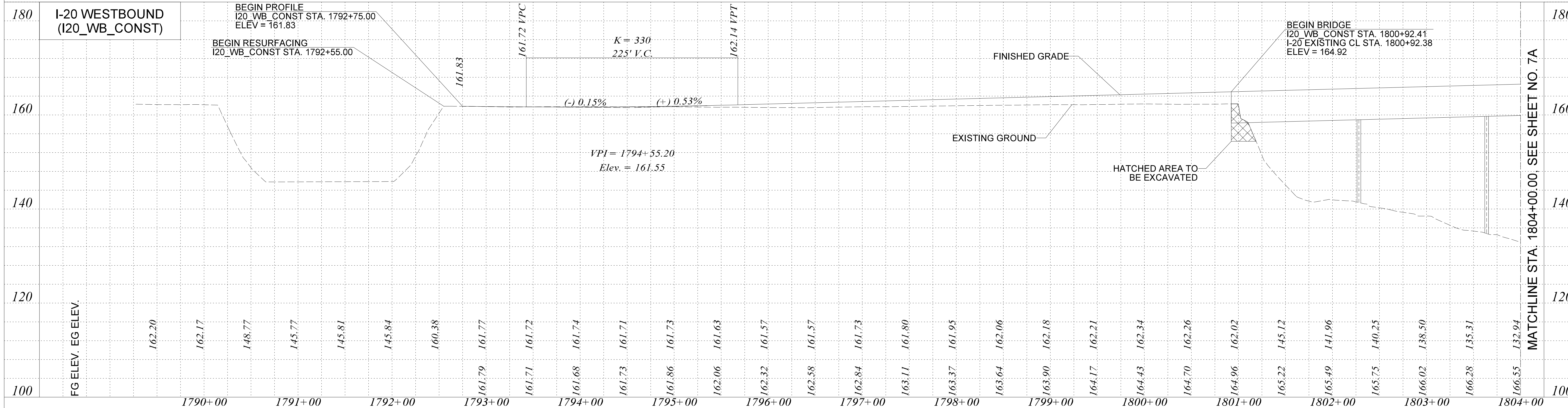
**PRELIMINARY PLANS
NOT FOR CONSTRUCTION**

4				
3				
2				
1				
REV. NO.	BY	DATE	DESCRIPTION OF REVISION	
TOPO.		DATE		
DWG.		DATE	GROUP	
R/W		DATE		

SOUTH CAROLINA
 DEPARTMENT OF TRANSPORTATION
 ROAD DESIGN COLUMBIA, S.C.
 KERSHAW COUNTY
 CONTRACT ID 2847360
 I-20 OVER WATeree RIVER
 TWIN BRIDGES REPLACEMENT
 PLAN SHEET
 SCALE 1"=50' RTE. I-20 DWG. NO. 6

randy.roberts
 Y:\Projects\0015000\0016000\16222 I-20 Bridge Replacement over Wateree River\Dgn\Plan Sheets\006-2847360_Plan.dgn
 4/29/2022

FED. RD. DIST. NO.	STATE	COUNTY	CONTRACT ID	ROUTE	SHEET NO.
3	S.C.	KERSHAW	2847360	I-20	6A



randy.roberts
 Y:\Projects\0015000\0016000\16222 I-20 Bridge Replacement over Wateree River\Dgn\Plan Sheets\006A_2847360_Profile.dgn
 4/29/2022

PLANS PREPARED BY:

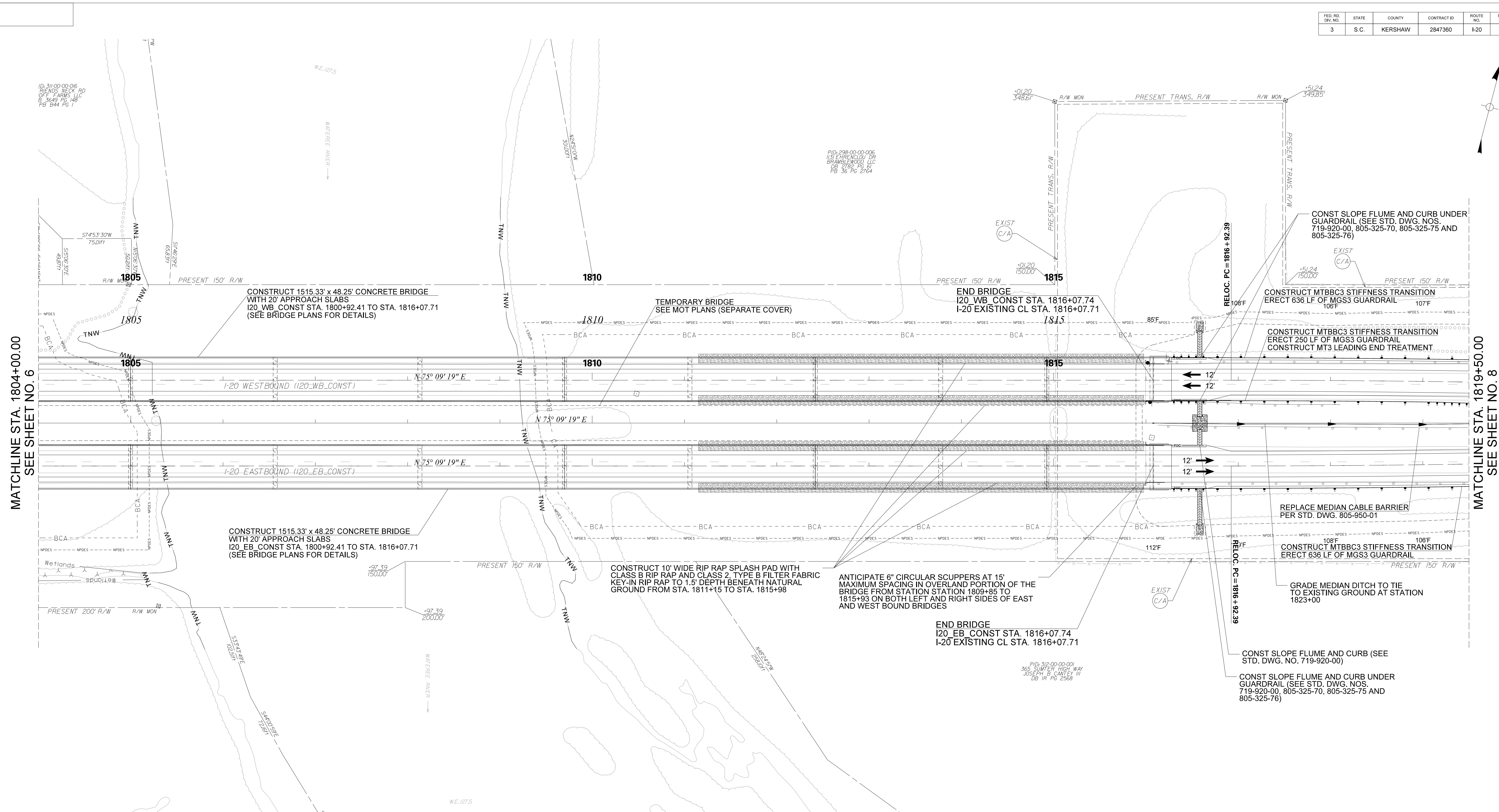
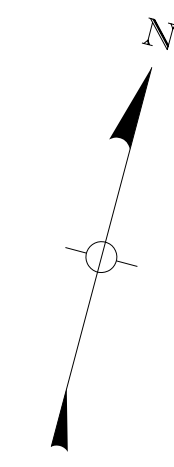


**PRELIMINARY PLANS
NOT FOR CONSTRUCTION**

4			
3			
2			
1			
REV. NO.	BY	DATE	DESCRIPTION OF REVISION

SOUTH CAROLINA
 DEPARTMENT OF TRANSPORTATION
 ROAD DESIGN COLUMBIA, S.C.
 KERSHAW COUNTY
 CONTRACT ID 2847360
 I-20 OVER WATREEE RIVER
 TWIN BRIDGES REPLACEMENT
 PROFILE SHEET
 SCALE 1"=50' RTE. I-20 DWG. NO. 6A

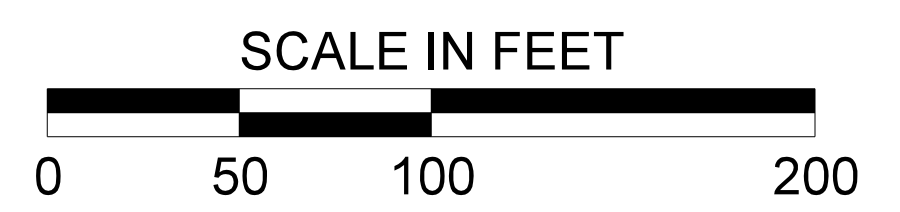
FED. RD. DIST. NO.	STATE	COUNTY	CONTRACT ID	ROUTE NO.	SHEET NO.
3	S.C.	KERSHAW	2847360	I-20	7



MATCHLINE STA. 1804+00.00
SEE SHEET NO. 6

MATCHLINE STA. 1819+50.00
SEE SHEET NO. 8

ALIGNMENT CONTROL CAN BE FOUND ON REFERENCE DATA SHEET



RELOCATE CENTERLINE NOTES:
RELOCATE CENTERLINE I-20 EB (I20_EB_CONST)
FROM STA 1793+77.51 TO STA. 1822+30.73

RELOCATE CENTERLINE I-20 WB (I20_WB_CONST)
FROM STA 1793+77.51 TO STA. 1822+30.73

PLANS PREPARED BY:

**PRELIMINARY PLANS
NOT FOR CONSTRUCTION**

4			
3			
2			
1			
REV. NO.	BY	DATE	DESCRIPTION OF REVISION
TOPO.		DATE	
DWG.		DATE	GROUP
R/W		DATE	

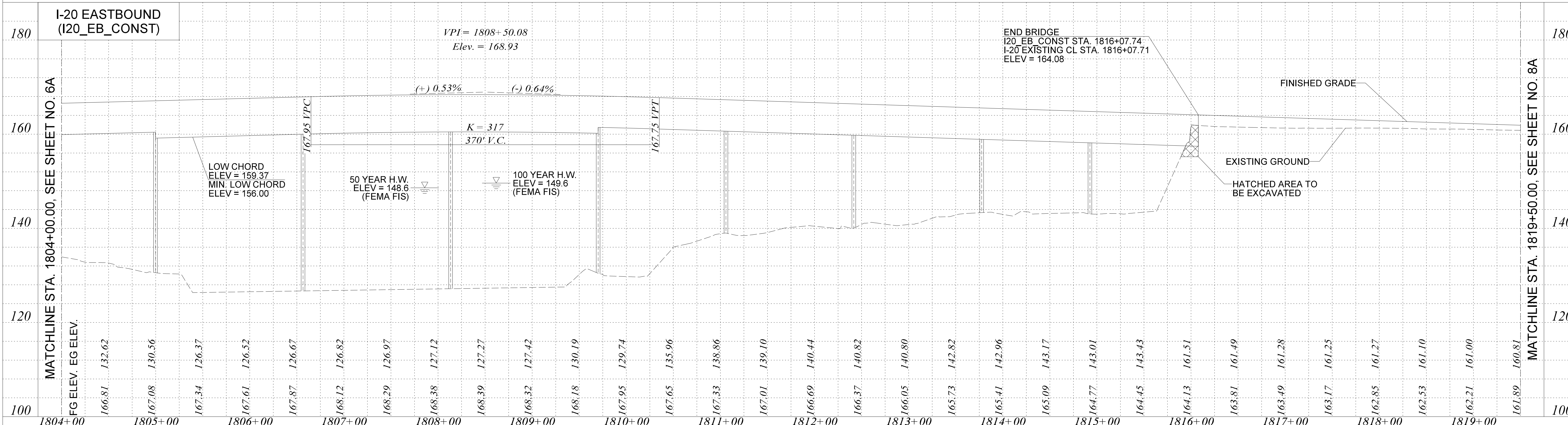
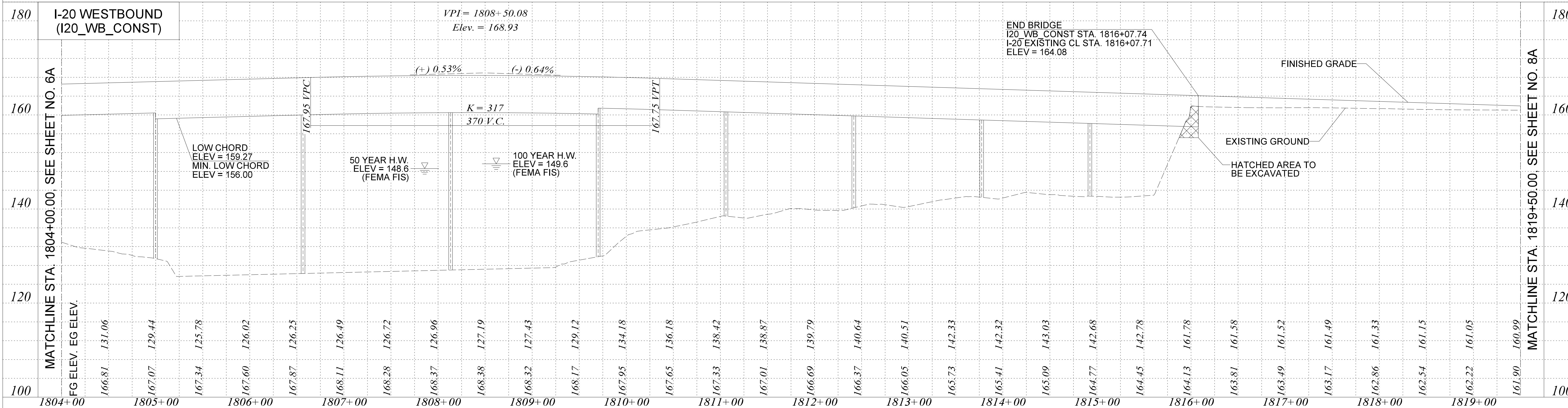
SOUTH CAROLINA
DEPARTMENT OF TRANSPORTATION
ROAD DESIGN COLUMBIA, S.C.

KERSHAW COUNTY
CONTRACT ID 2847360
I-20 OVER WATeree RIVER
TWIN BRIDGES REPLACEMENT
PLAN SHEET

SCALE 1"=50' RTE. I-20 DWG. NO. 7

randy.roberts
Y:\Projects\005000\006000\16222 I-20 Bridge Replacement over Wateree River\Dgn\Plan Sheets\007_2847360_Plan.dgn
4/29/2022

FED. RD. DIST. NO.	STATE	COUNTY	CONTRACT ID	ROUTE	SHEET NO.
3	S.C.	KERSHAW	2847360	I-20	7A



HYDROLOGY DATA:

D.A. = 5070 sq.mi. = 3244800 ac.
 Q50 = 178500 cfs
 Vel. = 3.7 ft/sec
 50 Year H.W. Elev. = 148.6 ft
 Q100 = 224500 cfs
 Vel. = 4.9 ft/sec
 100 Year H.W. Elev. = 149.6 ft.
 NOTE : Data from Bridge Section
 OVERTOPPING FLOOD:
 Q = 421300 cfs
 Probability = .2%

PLANS PREPARED BY:



PRELIMINARY PLANS
NOT FOR CONSTRUCTION

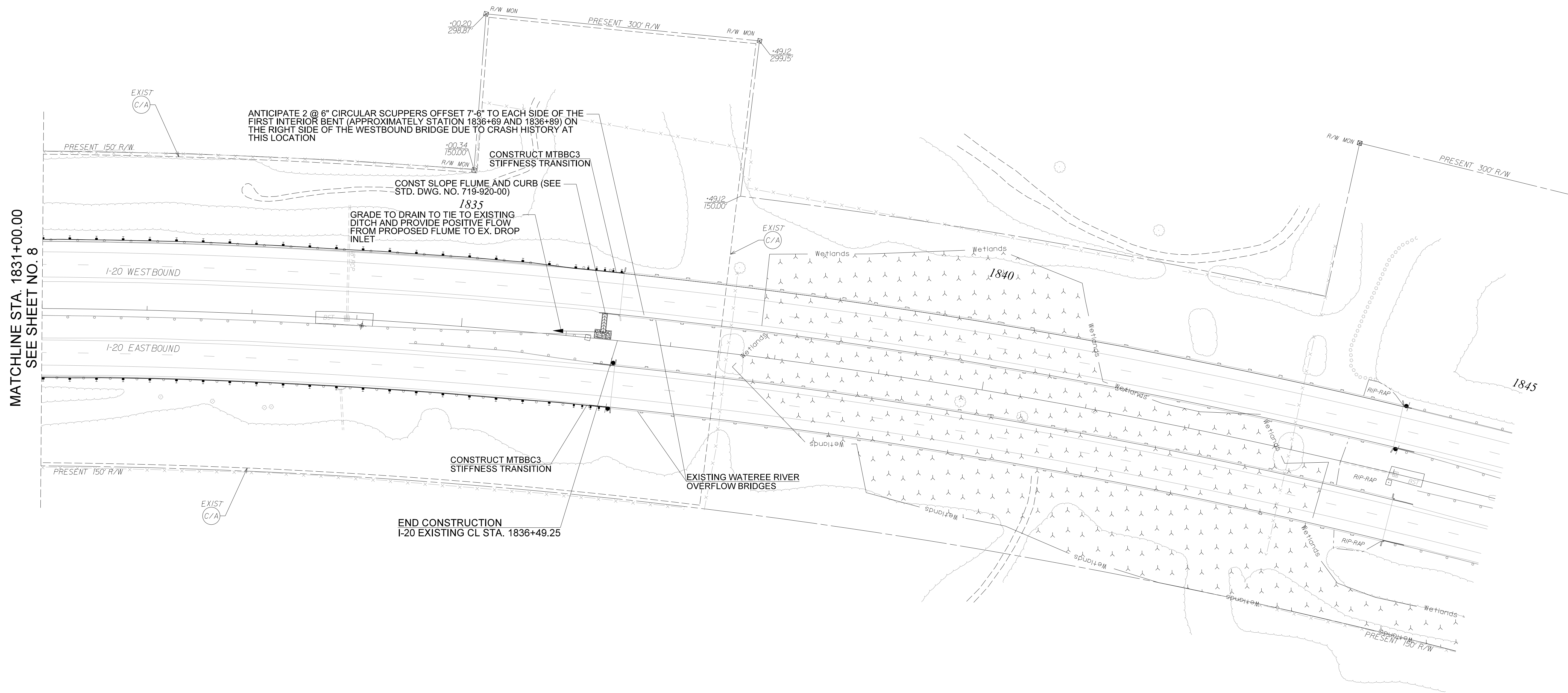
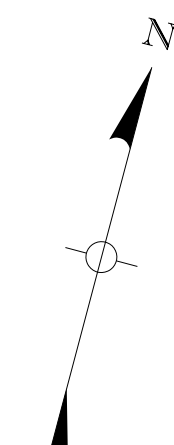
4			
3			
2			
1			
REV. NO.	BY	DATE	DESCRIPTION OF REVISION

SOUTH CAROLINA
DEPARTMENT OF TRANSPORTATION
ROAD DESIGN COLUMBIA, S.C.
KERSHAW COUNTY
CONTRACT ID 2847360
I-20 OVER WATEREE RIVER
TWIN BRIDGES REPLACEMENT
PROFILE SHEET

SCALE 1"=50' RTE. I-20 DWG. NO. 7A

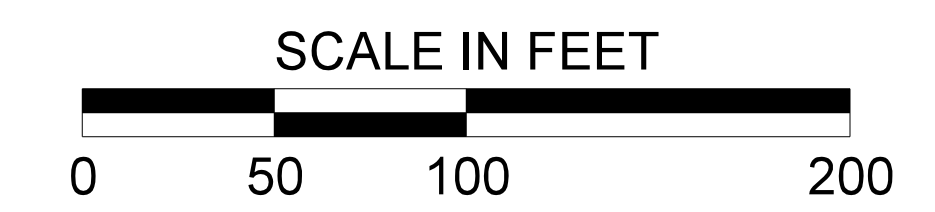
randy.roberts
 Y:\Projects\00150000\016222 I-20 Bridge Replacement over Wateree River\Dgn\Plan Sheets\007A_2847360_Profile.dgn
 4/29/2022

FED. RD. DIV. NO.	STATE	COUNTY	CONTRACT ID	ROUTE NO.	SHEET NO.
3	S.C.	KERSHAW	2847360	I-20	9



MATCHLINE STA. 1831+00.00
SEE SHEET NO. 8

ALIGNMENT CONTROL CAN BE FOUND ON REFERENCE DATA SHEET



randy.roberts
Y:\Projects\0015000\0016000\16222 I-20 Bridge Replacement over Wateree River\Dgn\Plan Sheets\009-2847360_Plan.dgn
4/29/2022

PLANS PREPARED BY:



NEEL-SCHAFFER
Solutions you can build upon

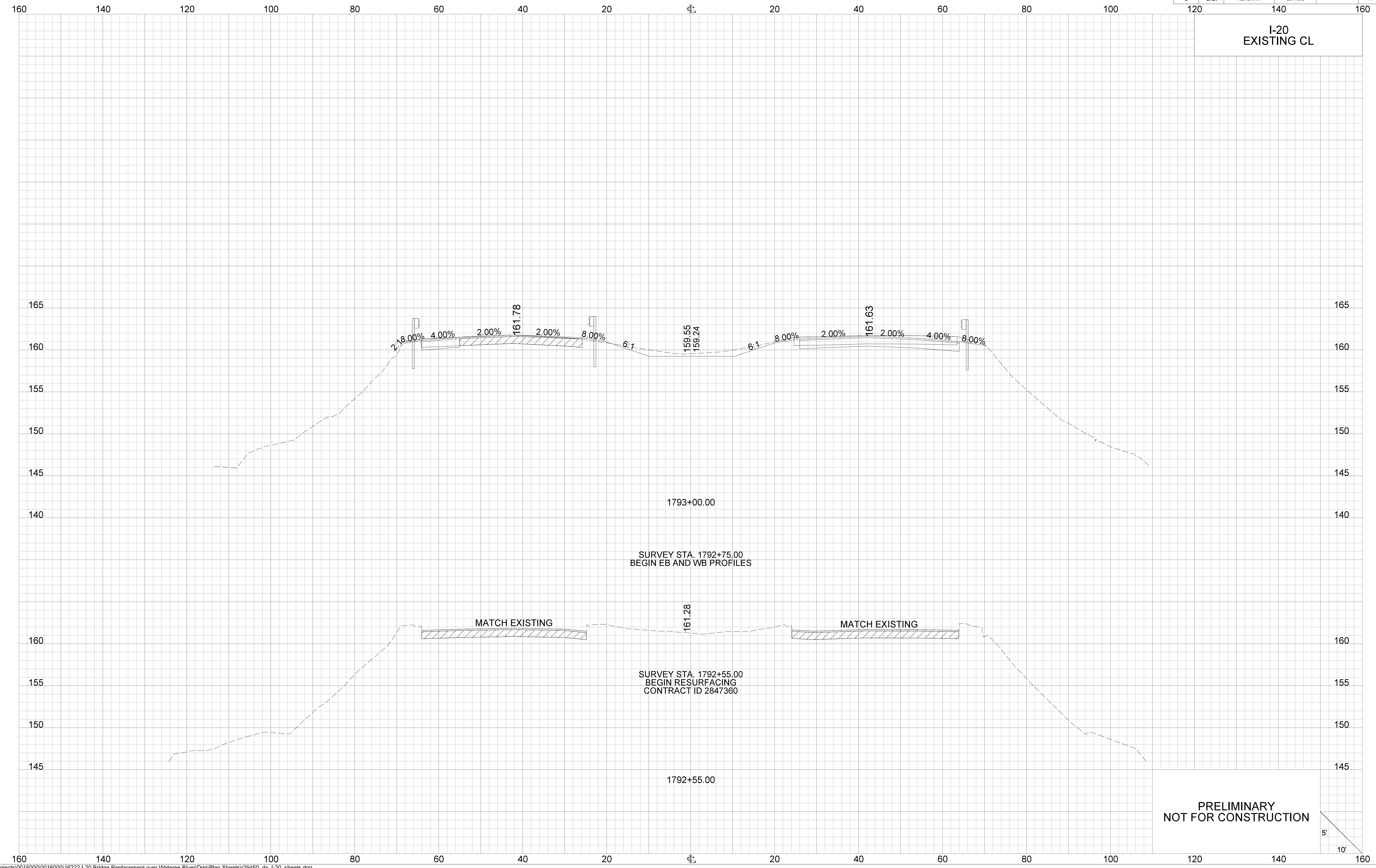
**PRELIMINARY PLANS
NOT FOR CONSTRUCTION**

4			
3			
2			
1			
REV. NO.	BY	DATE	DESCRIPTION OF REVISION
TOPO.			
DWG.			
R/W			

SOUTH CAROLINA
DEPARTMENT OF TRANSPORTATION
ROAD DESIGN COLUMBIA, S.C.
KERSHAW COUNTY
CONTRACT ID 2847360
I-20 OVER WATREEE RIVER
TWIN BRIDGES REPLACEMENT
PLAN SHEET
SCALE 1"=50' RTE. I-20 DWG. NO. 9

FED. RD. DIV. NO.	STATE	COUNTY	CONTRACT ID	ROUTE NO.	SHEET NO.
3	S.C.	KERSHAW	2847360	I-20	X1

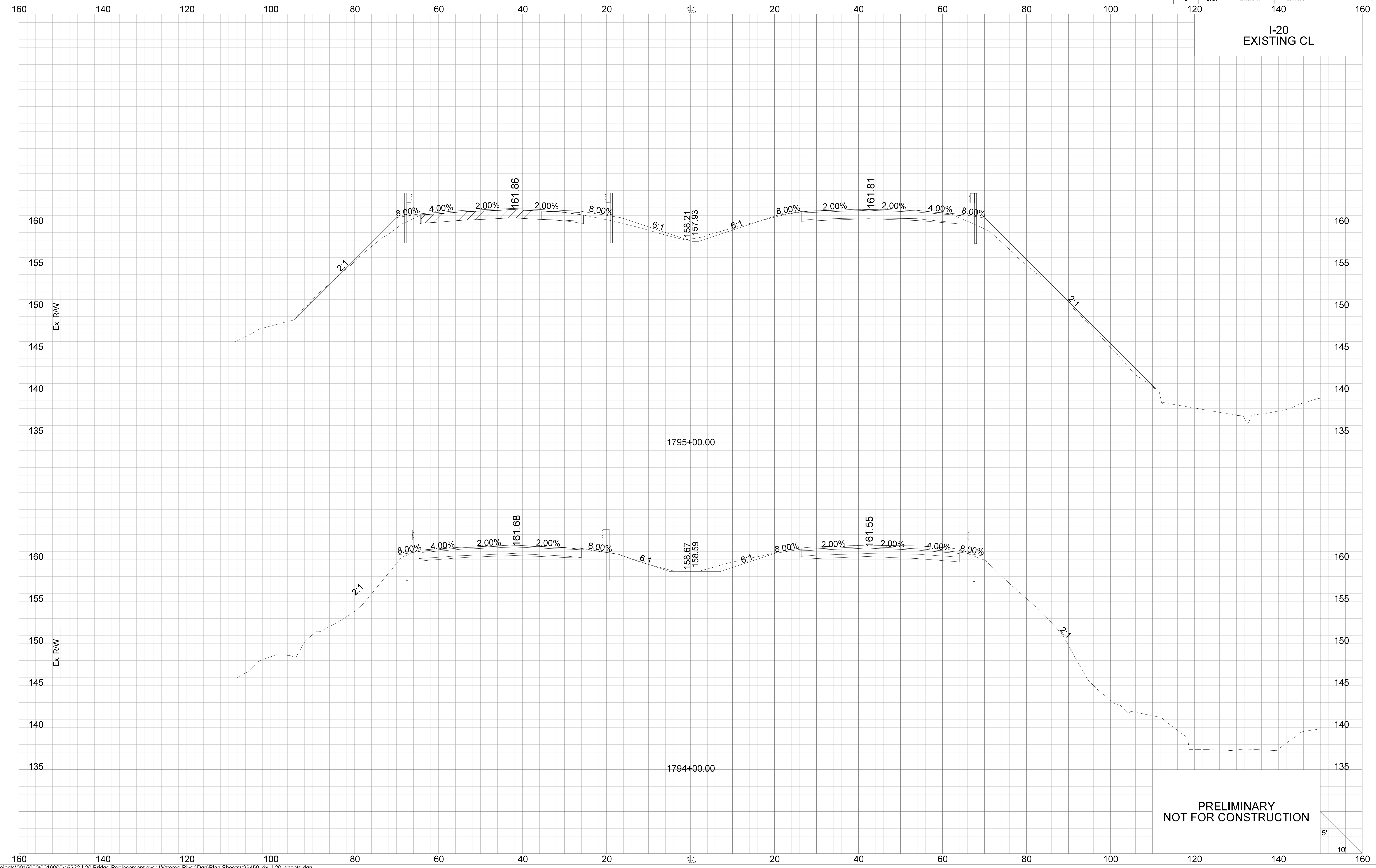
I-20
EXISTING CL



PRELIMINARY
NOT FOR CONSTRUCTION

FED. RD. DIV. NO.	STATE	COUNTY	CONTRACT ID	ROUTE NO.	SHEET NO.
3	S.C.	KERSHAW	2847360	I-20	X2

I-20
EXISTING CL

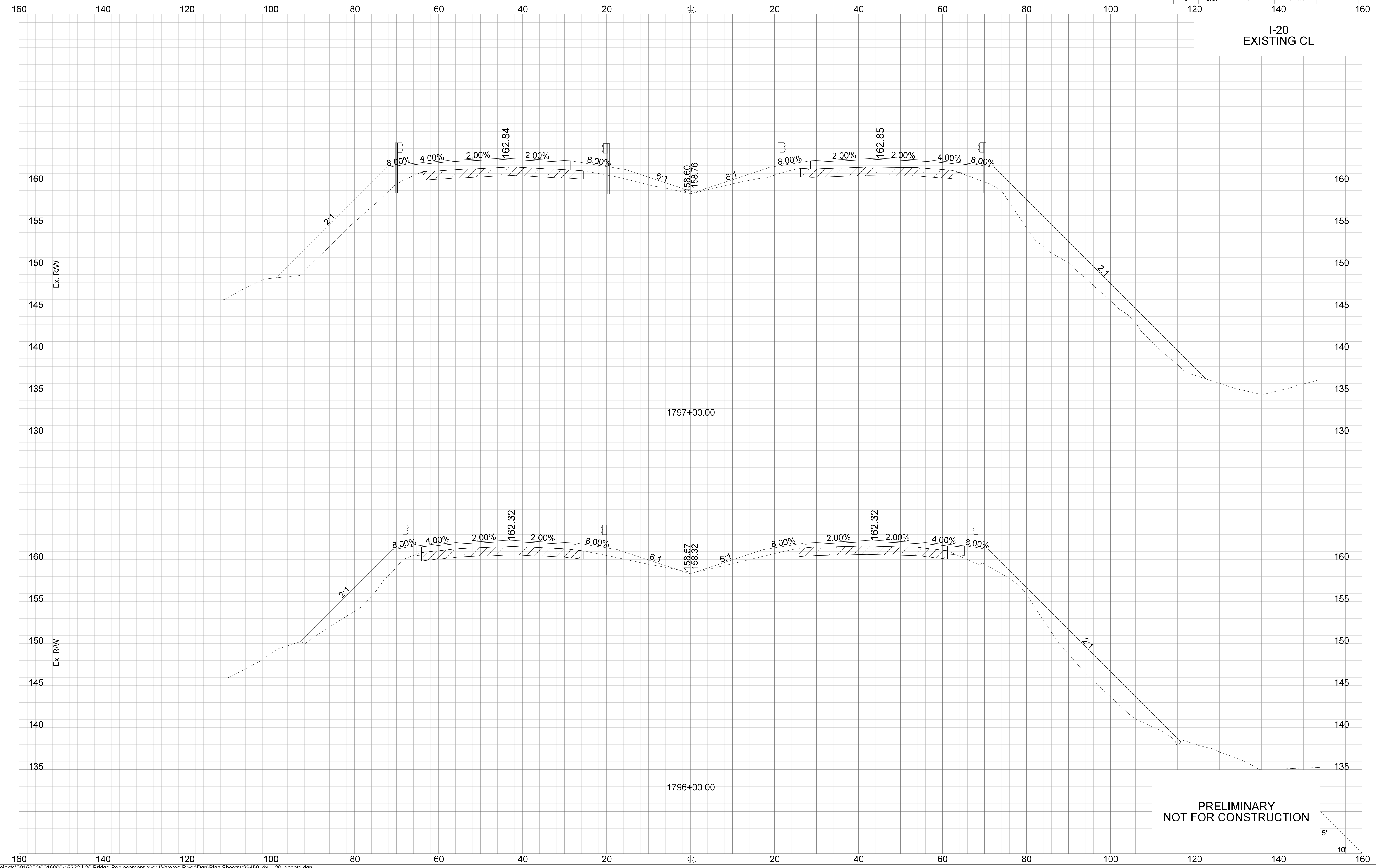


PRELIMINARY
NOT FOR CONSTRUCTION

5'
10'

FED. RD. DIV. NO.	STATE	COUNTY	CONTRACT ID	ROUTE NO.	SHEET NO.
3	S.C.	KERSHAW	2847360	I-20	X3

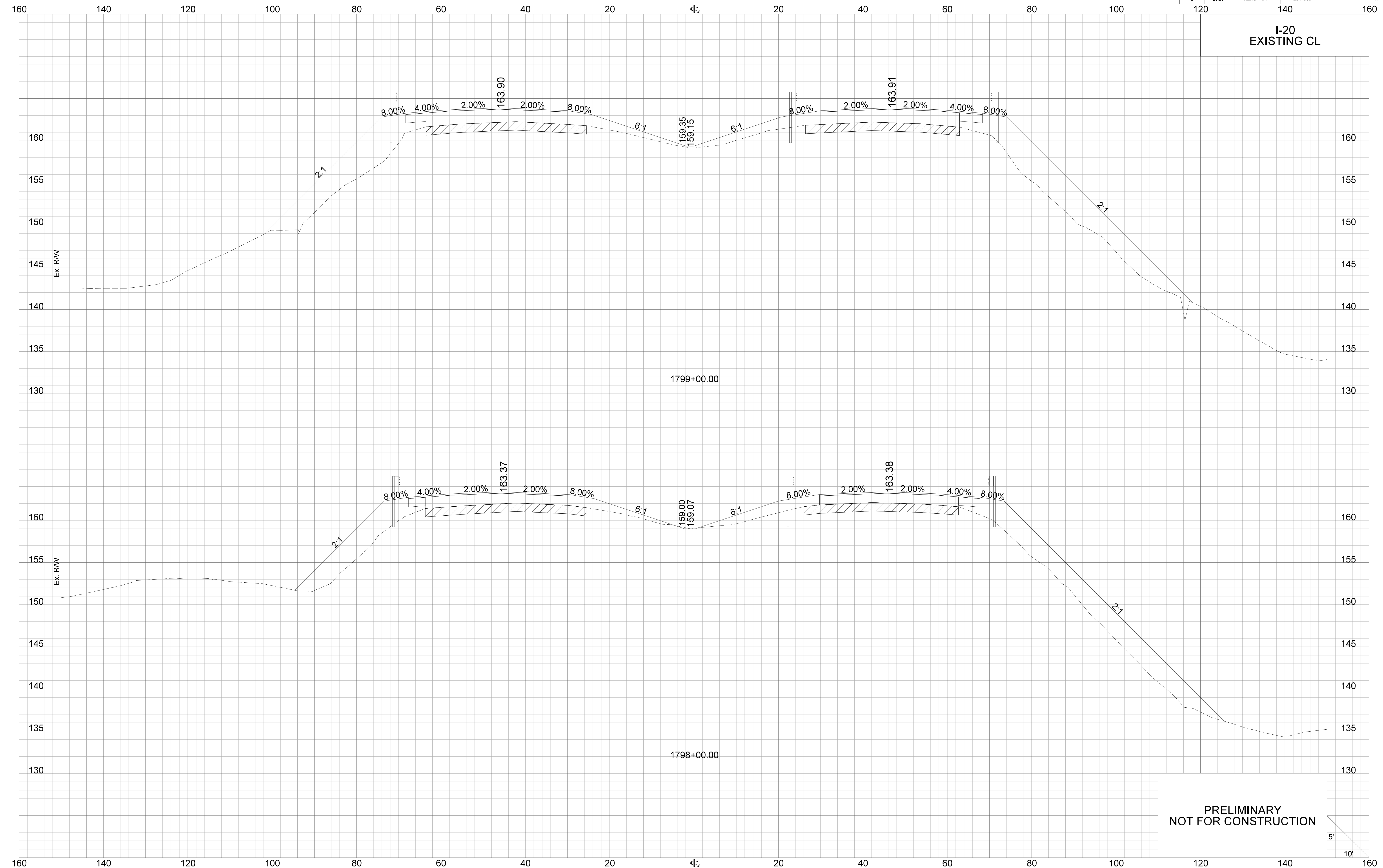
I-20
EXISTING CL



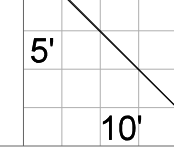
PRELIMINARY
NOT FOR CONSTRUCTION

FED. RD. DIV. NO.	STATE	COUNTY	CONTRACT ID	ROUTE NO.	SHEET NO.
3	S.C.	KERSHAW	2847360	I-20	X4

I-20
EXISTING CL

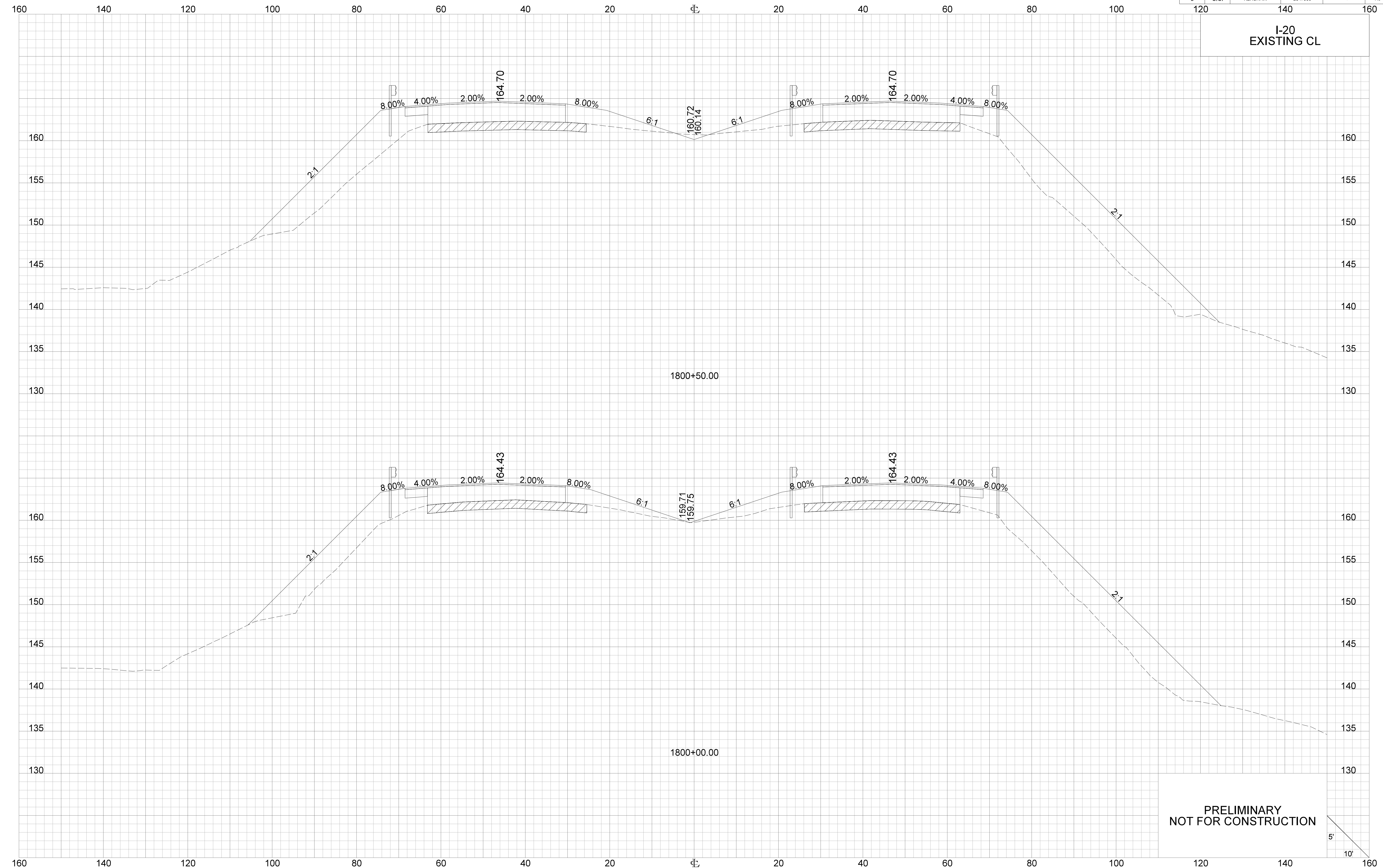


PRELIMINARY
NOT FOR CONSTRUCTION



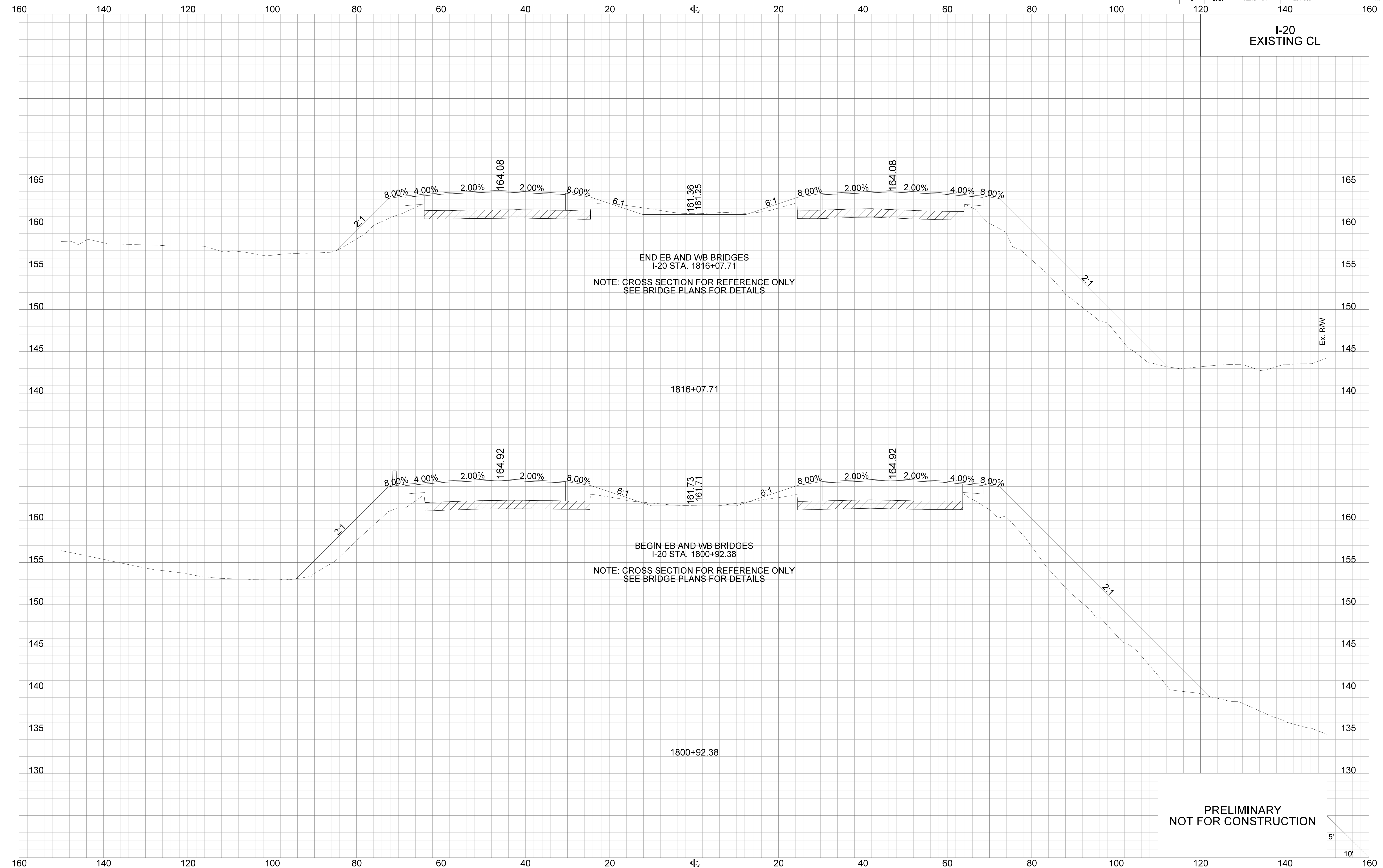
FED. RD. DIV. NO.	STATE	COUNTY	CONTRACT ID	ROUTE NO.	SHEET NO.
3	S.C.	KERSHAW	2847360	I-20	X5

I-20
EXISTING CL



PRELIMINARY
NOT FOR CONSTRUCTION

**I-20
EXISTING CL**



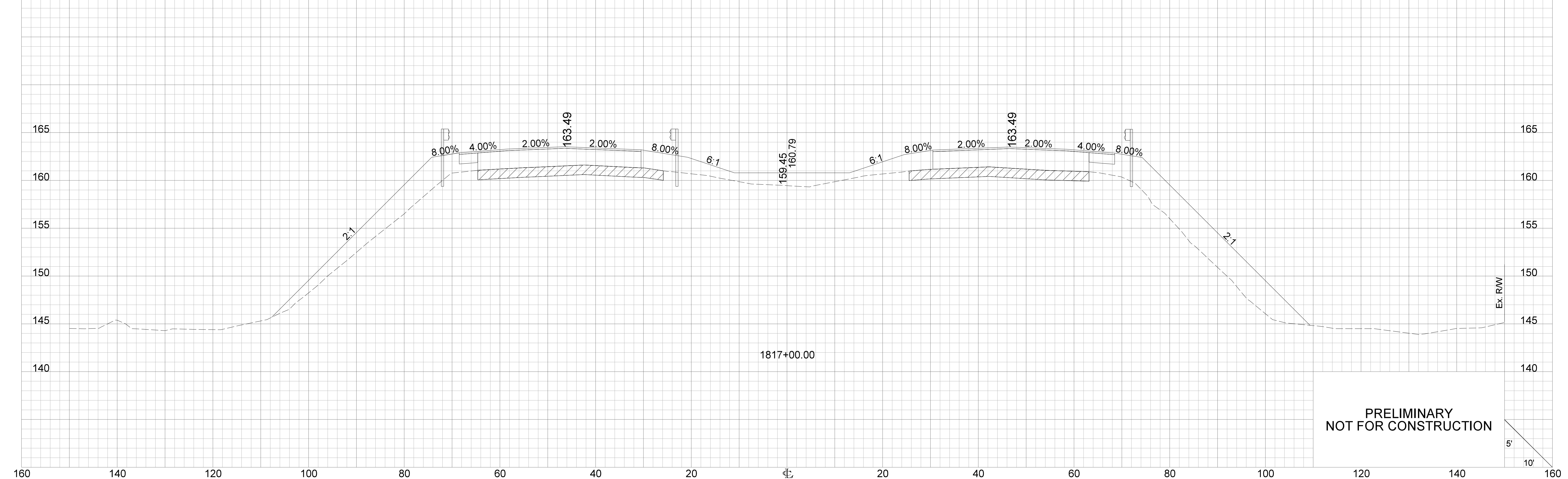
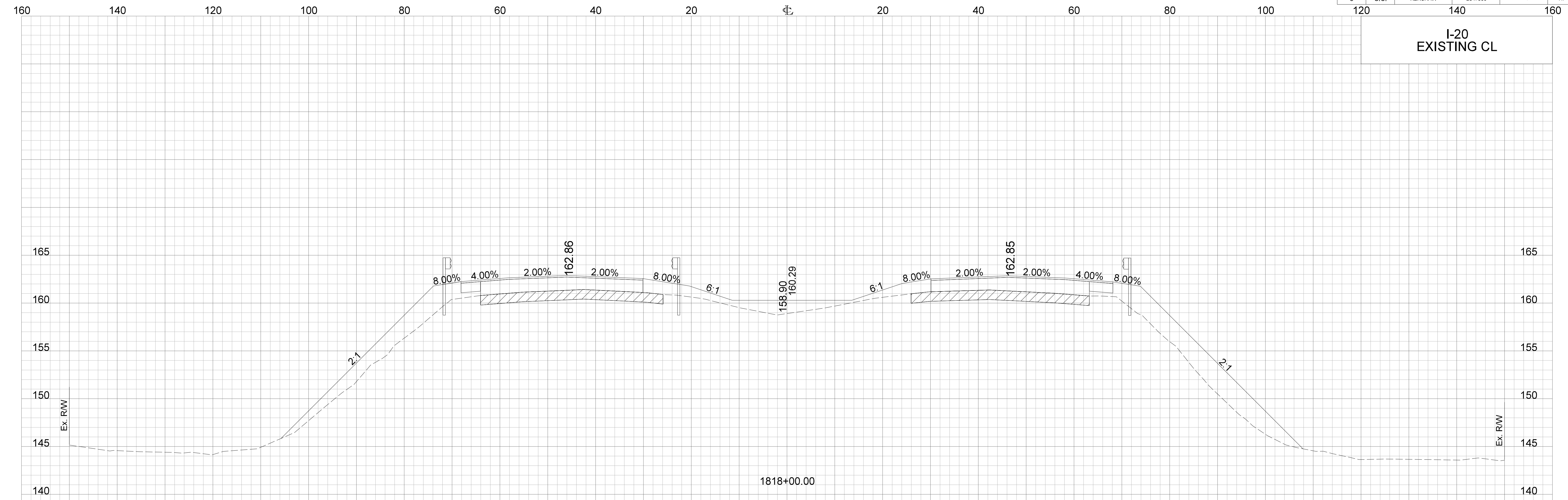
END EB AND WB BRIDGES
I-20 STA. 1816+07.71
NOTE: CROSS SECTION FOR REFERENCE ONLY
SEE BRIDGE PLANS FOR DETAILS

BEGIN EB AND WB BRIDGES
I-20 STA. 1800+92.38
NOTE: CROSS SECTION FOR REFERENCE ONLY
SEE BRIDGE PLANS FOR DETAILS

**PRELIMINARY
NOT FOR CONSTRUCTION**

FED. RD. DIV. NO.	STATE	COUNTY	CONTRACT ID	ROUTE NO.	SHEET NO.
3	S.C.	KERSHAW	2847360	I-20	X7

I-20
EXISTING CL

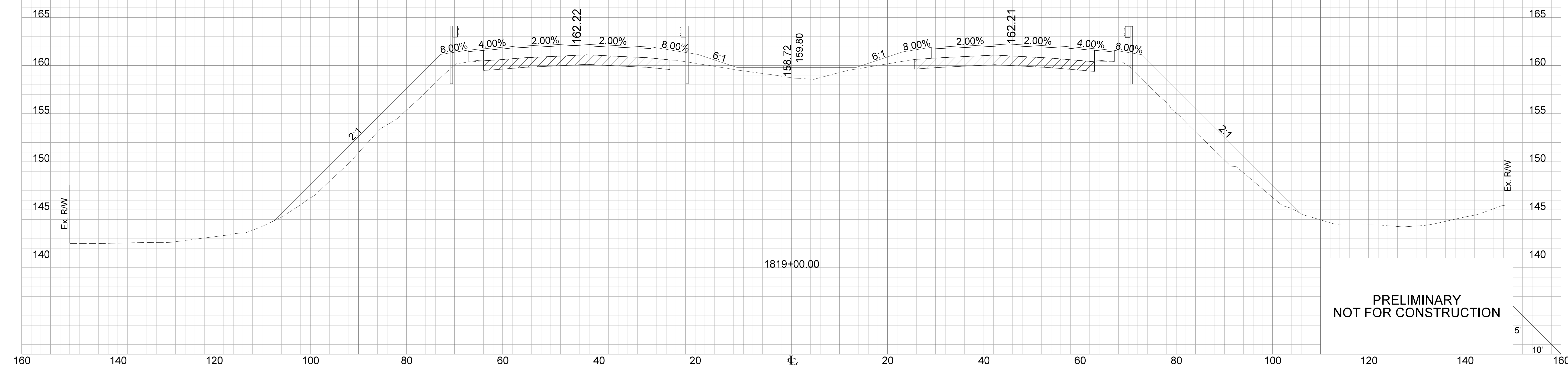
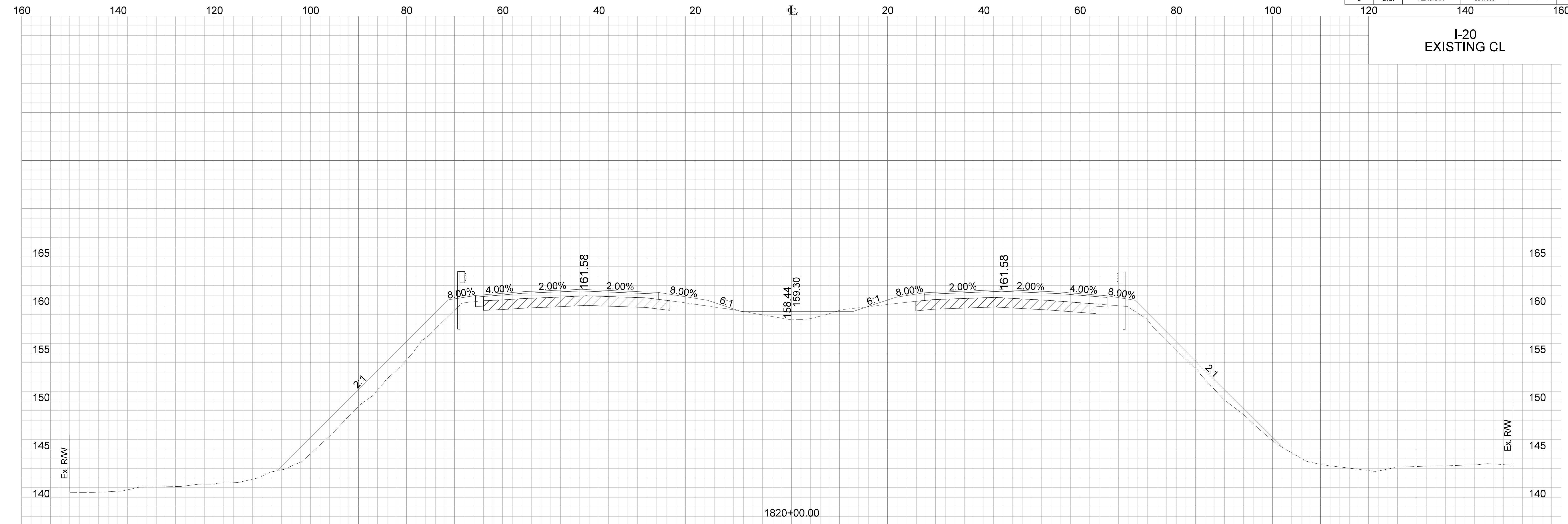


PRELIMINARY
NOT FOR CONSTRUCTION

5'
10'

FED. RD. DIV. NO.	STATE	COUNTY	CONTRACT ID	ROUTE NO.	SHEET NO.
3	S.C.	KERSHAW	2847360	I-20	X8

I-20
EXISTING CL

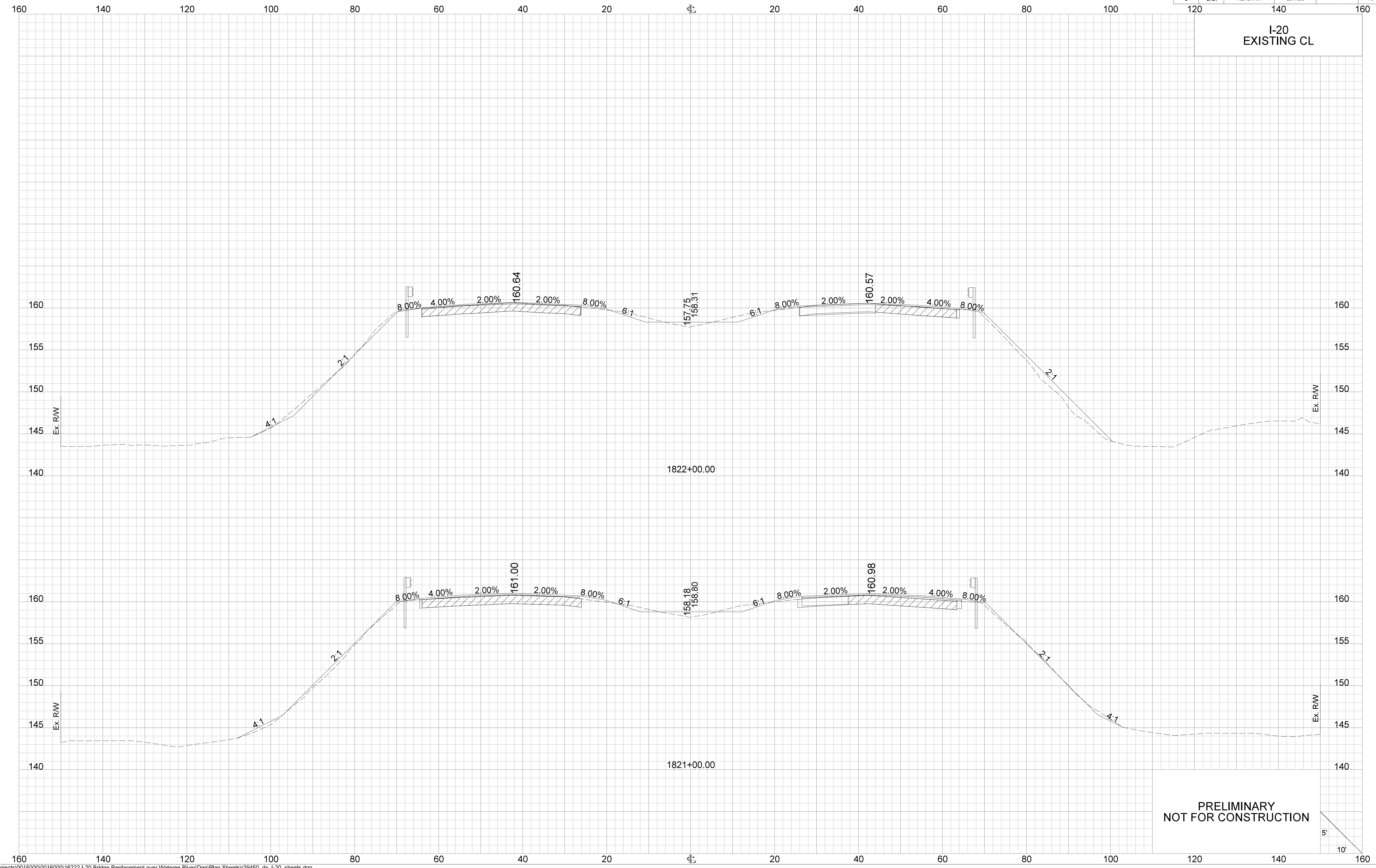


PRELIMINARY
NOT FOR CONSTRUCTION

5'
10'

FED. RD. DIV. NO.	STATE	COUNTY	CONTRACT ID	ROUTE NO.	SHEET NO.
3	S.C.	KERSHAW	2847360	I-20	X9

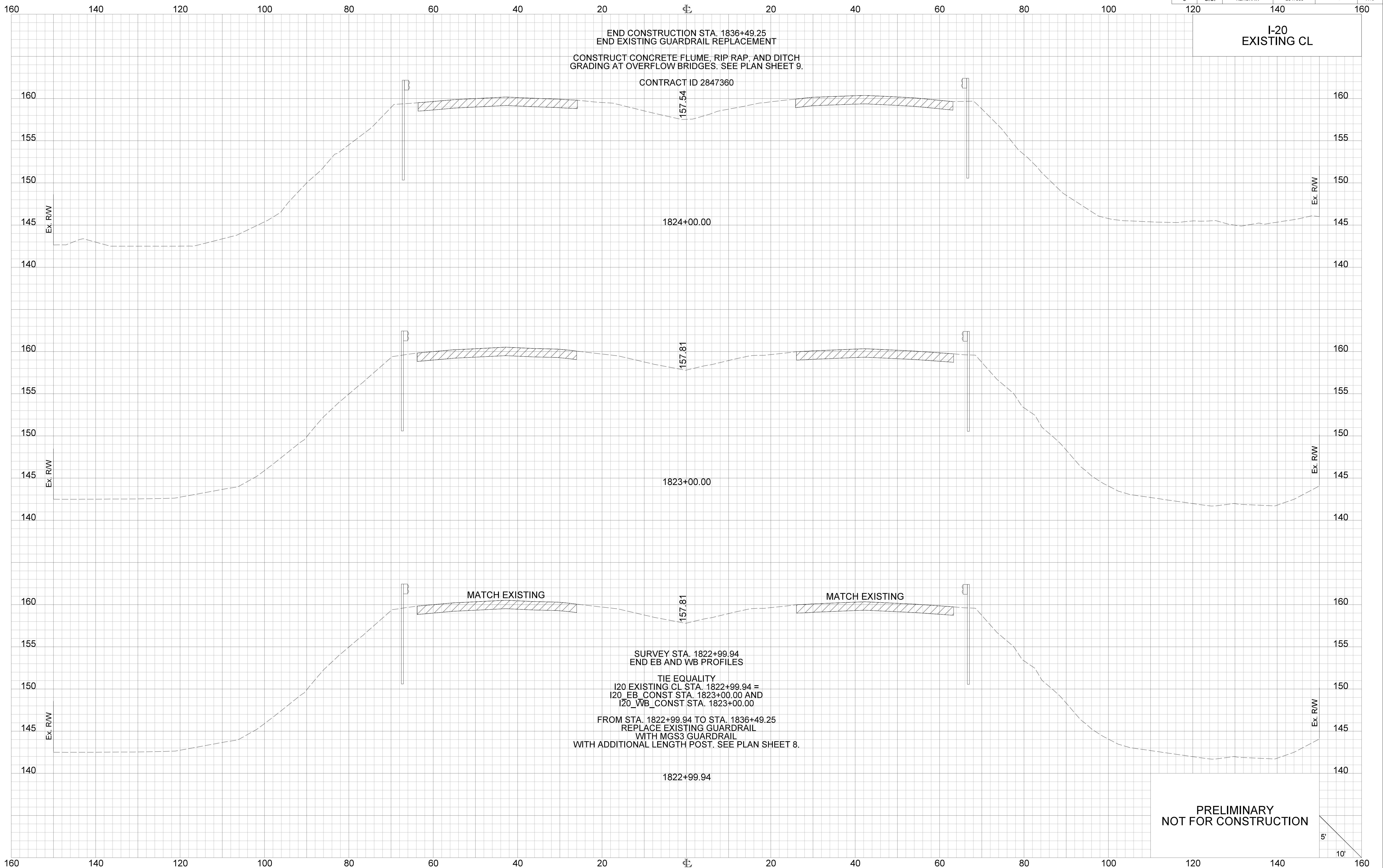
I-20
EXISTING CL



PRELIMINARY
NOT FOR CONSTRUCTION

5'
10'

FED. RD. DIV. NO.	STATE	COUNTY	CONTRACT ID	ROUTE NO.	SHEET NO.
3	S.C.	KERSHAW	2847360	I-20	X10



END CONSTRUCTION STA. 1836+49.25
 END EXISTING GUARDRAIL REPLACEMENT
 CONSTRUCT CONCRETE FLUME, RIP RAP, AND DITCH
 GRADING AT OVERFLOW BRIDGES. SEE PLAN SHEET 9.

CONTRACT ID 2847360

I-20
 EXISTING CL

MATCH EXISTING

MATCH EXISTING

SURVEY STA. 1822+99.94
 END EB AND WB PROFILES
 TIE EQUALITY
 I20 EXISTING CL STA. 1822+99.94 =
 I20_EB_CONST STA. 1823+00.00 AND
 I20_WB_CONST STA. 1823+00.00
 FROM STA. 1822+99.94 TO STA. 1836+49.25
 REPLACE EXISTING GUARDRAIL
 WITH MGS3 GUARDRAIL
 WITH ADDITIONAL LENGTH POST. SEE PLAN SHEET 8.

PRELIMINARY
 NOT FOR CONSTRUCTION